

ACCEPTED MANUSCRIPT

## Robust extraction of basis functions for simultaneous and proportional myoelectric control via sparse non-negative matrix factorization

To cite this article before publication: Chuang Lin *et al* 2017 *J. Neural Eng.* in press <https://doi.org/10.1088/1741-2552/aa9666>

### Manuscript version: Accepted Manuscript

Accepted Manuscript is “the version of the article accepted for publication including all changes made as a result of the peer review process, and which may also include the addition to the article by IOP Publishing of a header, an article ID, a cover sheet and/or an ‘Accepted Manuscript’ watermark, but excluding any other editing, typesetting or other changes made by IOP Publishing and/or its licensors”

This Accepted Manuscript is © 2017 IOP Publishing Ltd.

During the embargo period (the 12 month period from the publication of the Version of Record of this article), the Accepted Manuscript is fully protected by copyright and cannot be reused or reposted elsewhere.

As the Version of Record of this article is going to be / has been published on a subscription basis, this Accepted Manuscript is available for reuse under a CC BY-NC-ND 3.0 licence after the 12 month embargo period.

After the embargo period, everyone is permitted to use copy and redistribute this article for non-commercial purposes only, provided that they adhere to all the terms of the licence <https://creativecommons.org/licenses/by-nc-nd/3.0>

Although reasonable endeavours have been taken to obtain all necessary permissions from third parties to include their copyrighted content within this article, their full citation and copyright line may not be present in this Accepted Manuscript version. Before using any content from this article, please refer to the Version of Record on IOPscience once published for full citation and copyright details, as permissions will likely be required. All third party content is fully copyright protected, unless specifically stated otherwise in the figure caption in the Version of Record.

View the [article online](#) for updates and enhancements.

# Robust Extraction of Basis Functions for Simultaneous and Proportional Myoelectric Control via Sparse Non-negative Matrix Factorization

Chuang Lin<sup>1</sup>, Binghui Wang<sup>2</sup>, Ning Jiang<sup>3</sup>, and Dario Farina<sup>4\*</sup>

<sup>1</sup> Research Center for Neural Engineering, Institute of Biomedical and Health Engineering, Shenzhen Institutes of Advanced Technology, Chinese Academy of Sciences, China.

<sup>2</sup> Department of Electrical and Computer Engineering, Iowa State University, Ames, IA, 50010 USA.

<sup>3</sup> Department of Systems Design Engineering, Faculty of Engineering, University of Waterloo, Waterloo, Canada

<sup>4</sup> Department of Bioengineering, Imperial College London, London, UK, SW7 2AZ London, UK

\*Email: d.farina@imperial.ac.uk

## Abstract

*Objective.* This paper proposes a novel simultaneous and proportional multiple degree of freedom (DOF) myoelectric control method for active prostheses. *Approach.* The approach is based on non-negative matrix factorization (NMF) of surface EMG signals with the inclusion of sparseness constraints. By applying a sparseness constraint to the control signal matrix, it is possible to extract the basis information from arbitrary movements (quasi-unsupervised approach) for multiple DOFs concurrently. *Main Results.* In online testing based on target hitting, able-bodied subjects reached a greater throughput (TP) when using sparse NMF (SNMF) than with classic NMF or with linear regression (LR). Accordingly, the completion time (CT) was shorter for SNMF than NMF or LR. The same observations were made in two patients with unilateral limb deficiencies. *Significance.* The addition of sparseness constraints to NMF allows for a quasi-unsupervised approach to myoelectric control with superior results with respect to previous methods for the simultaneous and proportional control of multi-DOF. *Significance.* The proposed factorization algorithm allows robust simultaneous and proportional control, is superior to previous supervised algorithms, and, because of minimal supervision, paves the way to online adaptation in myoelectric control.

## Keywords

Muscle synergy, myoelectric signal processing, sparseness constraint non-negative matrix factorization, prosthetic control

## 1. Introduction

The surface electromyographic (EMG) signal has been used as the control source for multifunction prostheses for decades. In this study we will specifically focus on myoelectric control for wrist function replacement, given its clinical relevance. Currently, state-of-the-art wrist-control prosthetic hands employ machine learning techniques to extract the neuromuscular control information from the surface EMG. Researchers have proposed several control schemes based on pattern recognition techniques [1], and have also made progresses in enhancing the control accuracy by spatial filtering [2], sensory feedback [3,4], and approaches insensitive to shifting and rotation of the electrodes [5]. Moreover, targeted muscle reinnervation is currently a successful clinical solution for prosthetic control in high-level amputations, that can be combined with pattern recognition [6–8]. However, with respect to the classic sequential control scheme of pattern recognition, natural limb movements consist in the simultaneous activations of multiple DOFs.

For simultaneous and proportional control, Jiang et al. have analyzed the muscle synergy model and utilized the classic non-negative matrix factorization (NMF) algorithm [9] to blindly solve a multi-channel EMG factorization problem that provided continuous control signals. The NMF scheme adopts a DOF-wise training strategy, according to which simultaneous control of multi-DOF is obtained by linear summation of single-DOF activations. This allows simultaneous and proportional EMG control without multi-DOF training data [9,10]. Despite the promising results of this scheme, there are still shortcomings. The most relevant limitation of the NMF approach for myoelectric control is that it requires a DOF-wise calibration phase during which the user should activate single DOFs in a predefined order, e.g., first activate DOF1 for several trials, and then DOF2. This procedure may be inconvenient and, more importantly, the prosthetic user may not be able to exactly activate an individual DOF. If the activations in the training phase are not precisely of single DOFs, the DOF-wise based NMF scheme would generate an inadequate synergy matrix, leading to poor control. This behavior is due to the fact that the classic NMF cannot generate a sparse enough factorization [11,12].

In this study, we propose an alternative approach to the classic NMF scheme, our scheme can find out all the bases in the basis matrix robustly and concurrently in a quasi-unsupervised way by factorizing the multi-channel surface EMG signals with the inclusion of sparseness constraints to the control signal matrix. In this scheme, in the calibration phase, the subject does not need to follow a predefined sequence to activate single DOFs, and can even activate more than one DOF simultaneously, which is theoretically impossible in the former classic NMF scheme. Moreover, with this approach, the bases in the synergy matrix can be extracted in one step, contrary to the classic NMF scheme that extracts the bases sequentially for each DOF. For this purpose, we add constraints to the factorization solution and specifically we require the solution to maximize the sparseness of the resulting control function. The sparseness constraint restricts the space of possible NMF solutions. Specifically, the solution with basis functions corresponding to single DOFs, the target solution, is the sparser one among the other infinite solutions. In this way, the factorization with constraints does not require preset calibration phases or activations of single DOFs and can be applied to any set of tasks performed by the user without labeling. In this paper, we present the mathematical background for this new approach and we test it in both able-bodied individuals and amputees. A preliminary version of this work has been reported as a conference abstract in reference[13].

## 2. Methods

### 2.1. Sparse Non-negative Matrix Factorization

We propose to blindly estimate the control functions through SNMF of multi-channel EMG signals. Before providing an overview of the sparse NMF (SNMF) algorithm and showing how it can be adapted for its use in myoelectric control, we first provide a brief introduction to NMF.

The NMF method consists in finding two non-negative matrices whose product is a good approximation of the recorded signal matrix. At the same time, the NMF representation should be able to learn the parts of the objects (the recorded signal matrices), i.e. it should be able to discover the local signal characteristics in an additive way. This is in contrast to other methods, such as PCA (principal components analysis) and VQ (vector quantization), that learn holistic, not parts-based, representations. For face representation, for example, the basis face in NMF, PCA, and VQ is localized feature [11,12], eigenface [14], and whole face [15], respectively. The non-negative constraint used in NMF allows only additive, not subtractive, combinations, which leads to the parts-based representation [11,12]. The two factorized non-negative matrices are called basis matrix and coefficient matrix (control signal matrix), respectively. NMF has recently received considerable attention as a framework to solve a variety of problems, e.g., document clustering [16], face recognition [17], graph clustering [18,19], DNA gene expression analysis [20], and myoelectric control[9]. However, the NMF [12] algorithm has some limitations, which has been discussed extensively[17,18,21]. One of the notable issues of NMF is that it does not result in sparse enough solutions[21–23]. Researchers tried to solve this problem by incorporating sparseness constraints[21,24–29]. These approaches extended the NMF framework to include a sparseness parameter to learn more localized features.

In myoelectric control, a movement of more than one DOF can be decomposed as the linear combination of basic DOFs, and the latent synergy basis and the control signal are non-negative[30,31].

Let's denote the root mean square (RMS) values of the  $N$ -channel  $T$ -length surface EMG signal as  $\mathbf{Z}$ , in which the  $t$ -th column is the EMG signal at time  $t$  and denote  $m$  the number of DOFs. Then, the multi-channel observation can be approximated by the product of a  $N \times 2m$  latent non-negative synergy basis matrix  $\mathbf{W}$  and a  $2m \times T$  latent non-negative control signal matrix  $\mathbf{F}$ :

$$\mathbf{Z}_{N \times T} \approx \mathbf{W}_{N \times 2m} \mathbf{F}_{2m \times T} \quad (1)$$

The above factorization problem can be solved in a semi-supervised way. Specifically, by using a DOF-wise training strategy, online experiments showed that NMF achieved good performance[9][30,31]. The DOF-wise training strategy, according to which the user is asked to perform single-DOF movements in a predefined order, is needed to obtain a sparse factorization with NMF. The sparseness of the solution is obtained by imposing a specific single-DOF activation sequence for calibration. Myoelectric control based on NMF is then based on the summation property of DOFs in the muscle signal domain. The control signals are identified for the single DOFs and then used in combination for simultaneous control. If the training is not performed using predefined single-DOF activations, the NMF will not provides a factorization with basis functions that are linear combinations of single DOFs. In this case, the DOFs would not be separated for the control, which would not be intuitive. Unfortunately, single-DOF movements, as required by NMF, are not always possible because the user may not be able to exactly separate the activations of DOFs.

In this study we propose a mathematical way to generate a sparse solution without the need for the specific set of calibration data to be generated by single DOF activations. We achieve this by imposing a sparseness constraint to the control signals, which leads to the SNMF [20] scheme. The sparseness constraint that we used determines a much sparser solution than with NMF that corresponds to single DOFs as basis functions.

Mathematically, the degree of sparseness can be controlled by  $l1$ -norm or  $l0$ -norm. For computational convenience, we selected the  $l1$ -norm based SNMF method, SNMF [20]. The objective function of the SNMF method is:

$$\begin{aligned}
& \min_{\mathbf{W}, \mathbf{F}} \frac{1}{2} \|\mathbf{Z} - \mathbf{W}\mathbf{F}\|_{Fro}^2 + \lambda \sum_{t=1}^T \|\mathbf{F}(:, t)\|_1^2 \quad s.t. \mathbf{W}, \mathbf{F} \geq \mathbf{0}, \\
& \Leftrightarrow \min_{\mathbf{W}, \mathbf{F}} \frac{1}{2} \left\| \mathbf{Z} - \begin{bmatrix} W_1^+, W_1^-, \dots, W_m^+, W_m^- \end{bmatrix} \begin{bmatrix} F_1^+ \\ F_1^- \\ \vdots \\ F_m^+ \\ F_m^- \end{bmatrix} \right\|_{Fro}^2 + \lambda \sum_{t=1}^T \left\| \begin{bmatrix} F(:, t)_1^+ \\ F(:, t)_1^- \\ \vdots \\ F(:, t)_m^+ \\ F(:, t)_m^- \end{bmatrix} \right\|_1^2 \\
& \quad s.t. W_{ij}, F_{ij} \geq 0
\end{aligned} \tag{2}$$

where  $\mathbf{F}(:, t)$  is the  $t$ -th column vector of  $\mathbf{F}$  [Eq. (1)], 'Fro' is the Frobenius norm, and  $\lambda > 0$  is a regularization parameter to balance the trade-off between the accuracy of the factorization and the degree of sparseness of  $\mathbf{F}$ . In the experiment, we chose the optimal  $\lambda$  through offline cross-validation (the details are presented in Section 3.1). In the current study,  $m = 2$  (see Section 2.4 for the experimental setup). The superscript '+' and '-' represent the positive and negative direction of each DOF, respectively. The above formulation can then be rewritten as

$$\min_{\mathbf{W}, \mathbf{F}} \left\| \begin{pmatrix} \mathbf{W} \\ \sqrt{\lambda} \mathbf{e}_{1 \times 2m} \end{pmatrix} \mathbf{F} - \begin{pmatrix} \mathbf{Z} \\ \mathbf{0}_{1 \times T} \end{pmatrix} \right\|_{Fro}^2 \quad s.t. \mathbf{W}, \mathbf{F} \geq \mathbf{0}, \tag{3}$$

where  $\mathbf{e}_{1 \times 2m}$  is a row vector with all entries equal to 1 and  $\mathbf{0}_{1 \times T}$  equal to 0. Eq. (3) can be efficiently solved via the alternating non-negative least squares (ANLS) method. In ANLS,  $\mathbf{W}$  and  $\mathbf{F}$  are iteratively updated by fixing the other one:

$$\mathbf{F}^{(k+1)} = \arg \min_{\mathbf{F}} \left\| \begin{pmatrix} \mathbf{W}^{(k)} \\ \sqrt{\lambda} \mathbf{e}_{1 \times 2m} \end{pmatrix} \mathbf{F} - \begin{pmatrix} \mathbf{Z} \\ \mathbf{0}_{1 \times T} \end{pmatrix} \right\|_{Fro}^2 \tag{4a}$$

$$\mathbf{W}^{(k+1)} = \arg \min_{\mathbf{W}} \|\mathbf{W}\mathbf{F}^{(k+1)} - \mathbf{Z}\|_{Fro}^2 \tag{4b}$$

Eqs. (4a) and (4b) are the classic least square problem, and each has a closed-form solution. Moreover, the detailed derivation in [20] shows that SNMF can converge to a stationary point.

SNMF can extract all the basis functions in one step from recordings generated by arbitrary combinations of DOFs by the user (concurrent way). Only the ordering of the control signals (basis functions) will be undetermined with this approach but this ambiguity can be simply resolved in practice. In practice, we need to record the label of the first 2 single DOFs to decide the sequence of the basis in the control signal matrix  $\mathbf{F}$ , which is the reason we refer to our method as quasi-unsupervised instead of completely unsupervised.

In addition to avoid the need for a pre-defined sequence of single-DOF activations, it is expected that the SNMF would outperform the NMF practically since the users (especially patients but even able-bodied subjects) are likely not able to precisely articulate single DOFs individually. If there are co-activations of DOFs in the set of signals used for factorization, the solutions achieved by NMF and SNMF would be different. In this case, the solution of SNMF is expected to be superior because it would impose the sparseness and would be closer to represent single DOFs in the columns of the synergy matrix.

## 2.2. Online Estimation of Control Signals

After obtaining the synergy basis matrix  $\mathbf{W}$  from a set of EMG signals, we assume it to be constant (at least over the course of the test experiments). To estimate control signals related to the intended activation levels of the DOFs, we apply the pseudo inverse of  $\mathbf{W}$  (denoted by  $\mathbf{W}^+$ ), and multiply it by newly recorded surface EMG signals  $\tilde{\mathbf{Z}}$ . The estimated control signals  $\tilde{\mathbf{F}}$  is therefore:

$$\tilde{\mathbf{F}} = \mathbf{W}^+ \tilde{\mathbf{Z}} \quad (5)$$

where

$$\tilde{\mathbf{F}} = [\tilde{F}_1^+; \tilde{F}_1^-; \tilde{F}_2^+; \tilde{F}_2^-;] \quad (6)$$

To ensure that no components are overshadowed by the others, each component of  $\tilde{\mathbf{F}}$  in (6) is normalized with respect to its maximum value. The estimated control signals in (6) are further scaled by the scalar correction factors  $\tau_{ij}$ , which are used to account for the indetermination of the signal power (range of control signals) in the factorization process (see Section II-D for details on these factors):

$$\begin{cases} \tilde{F}_1 = \tau_{11} \tilde{F}_1^+ - \tau_{12} \tilde{F}_1^- \\ \tilde{F}_2 = \tau_{21} \tilde{F}_2^+ - \tau_{22} \tilde{F}_2^- \end{cases} \quad (7)$$

where we name  $\tilde{F}_1$ ,  $\tilde{F}_2$  the control signals for DOF1 and DOF2, respectively. The multiplicative factors  $\tau_{ij}$  are determined for each subject so that the final control signals,  $\tilde{\mathbf{F}} = [\tilde{F}_1; \tilde{F}_2]$ , match the range of joint angles in the respective DOFs. These factors were manually set for each subject before operating online tasks. The obtained control signals, low-pass filtered at 6 Hz (kinematic bandwidth), are then used by the subjects for controlling the DOFs.

## 2.3. Subjects

Eight able-bodied subjects (six males, two females, 20-45 years old) and two subjects with unilateral limb deficiencies (25 and 46 years old) participated in the study. The experimental protocol was approved by the local ethic committee, and all subjects read and signed the informed consent form prior to their participation.

## 2.4. Experimental Protocol

During the experimental session, each subject was instructed to sit comfortably in a neutral position, with the dominant upper limb pointing downwards at the side of the body. We evenly placed 16 monopolar electrodes in two rings around the forearm, at a distance of 1/3 of the forearm length in the distal direction. The distance between the two rings of electrodes (inter-electrode distance in the proximal-distal direction) was 20 mm, and along the arm circumference direction it was in the range 25-35 mm, depending on the size of the forearm. The experimental protocol consisted of two phases. First, a set of surface EMG signals were collected for the factorization (needed for applying NMF that was used as control) and subsequently an online validation test was performed. During the validation phase, the subject performed goal-directed target hitting tasks controlling two DOFs. The detail of the two phases is described in the following.

### 2.4.1. Offline Factorization

The surface EMG signals were recorded by a biosignal amplifier (EMGUSB2, OT Bioelettronica, Italy) with the sampling rate of 2048 Hz (12 bit A/D, 3–900 Hz sixth-order Butterworth band-pass, 500–1000 gain). Following an on-screen prompt, the subjects were guided to perform a series of wrist movements to selectively activate flexion/extension (DOF1) or pronation/supination (DOF2) with the dominant arm, as well as the combination of the two DOFs. These two DOFs were chosen because they are functionally the

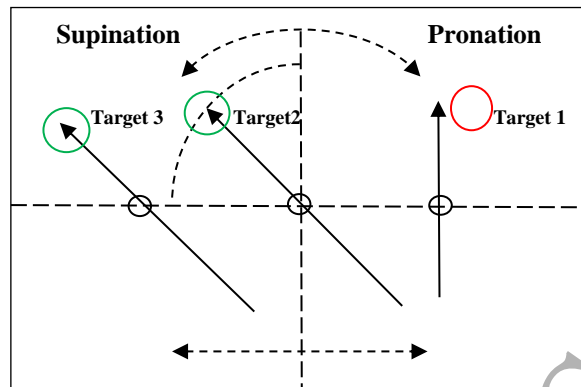


Figure 1. The illustration of the online feedback that the subjects were presented during the online control phase. One example for each of the three types of targets is presented. **Targets 1 and 2 are examples of those requiring separate activation of DOF1 and DOF2, respectively, while target 3 can only be reached by simultaneously activating both DOFs.** The illustration shown is for left-handed subjects, and the directions of the functions are reversed for right-handed subjects.

most important for transradial amputees, next to the hand open/close. The sequence of tasks was randomly selected. This sequence provided sets of signals of both single-DOF activations (for NMF) and combination of the DOFs (9 trials in each case). The on-screen prompt consisted of an arrow initially positioned in the center of the monitor, pointing vertically up. During this phase, lateral displacements of the arrow corresponded to flexion and extension (DOF1), while rotations of the arrow represented pronation and supination (DOF2) (Figure 1). The raw EMG signals collected in this phase were used for training NMF and SNMF, as well as linear regression (LR) that is another method proposed for simultaneous and proportional control of multi-DOF[32][33]. LR estimates the matrix  $\mathbf{W}$  in Eq. (5) in the following closed-form (supervised approach):

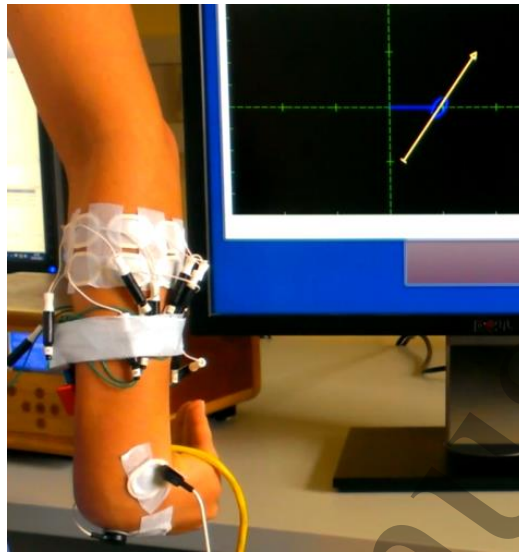
$$\mathbf{W} = (\mathbf{F}\mathbf{F}^T + \beta\mathbf{I})^{-1}\mathbf{F}^T\mathbf{Z} \quad (8)$$

where  $\mathbf{I}$  is the identity matrix and the regularization constant  $\beta$  is optimized by grid-search in the nested cross-validation [33].

For LR and NMF, we separately trained the data of DOF1 and DOF2 with a fully known trial order. The SNMF was trained either by single-DOF data (without any knowledge of the DOF or trial order) or by combination of DOFs. After the algorithms were calibrated, they were tested online. The training procedure for NMF consists in solving Eq. (1);  $\mathbf{Z}$  is factorized to  $\mathbf{W}$  and  $\mathbf{F}$ ,  $\mathbf{W}$  is the basis matrix, and  $\mathbf{F}$  is the control signal matrix. The testing procedure for NMF consists in calculating Eq (5);  $\hat{\mathbf{F}}$  is the control signal that we obtain. The training procedure for SNMF is similar to that for NMF with the difference that the sparseness constraint is added to  $\mathbf{F}$  when factorizing  $\mathbf{Z}$ . The training procedure for LR consists in calculating the LR model by solving the liner system of equations.

#### 2.4.2. Online Control Phase

The subject controlled the same arrow as in the training phase using the control signals obtained as in Eq. (5) for NMF and SNMF or by LR. The online control was in position mode, *i.e.*, without surface EMG activity, the arrow returned to its original position. Being in position mode the control needed to be proportional since the position depended on the intensity of activation, *i.e.* the spatial displacement of the arrow on the respective DOF is directly related to the control signals in Eqn. (7). Considering that the relative magnitudes of the 2 directions of the two DOFs were undetermined and the range of motion did not necessarily match the intended range, we scaled the factors to all four bases so that the subjects could reach the maximal displacements in all directions. The scaling was subject-specific and was made in a



**Figure 2. The experimental setup (electrode placement), as well as the online feedback provided to the subjects during the online control.**

simple practical way. Each subject was asked to activate each DoF maximally and the maximum activation was assigned to the maximum range of motion of the corresponding DoF. This was done before testing and was not adapted during testing. The online control performance of each algorithm was evaluated through a series of target hitting tests. Targets were displayed sequentially at different locations on the screen in the form of empty circles. The radius of each circle was 8 density-independent pixels (dp) with the entire working interface of  $360 \times 60$  dp. The subjects controlled the arrow using their forearm muscle contractions to place its tip within the circle for at least 300 ms, within a 20 s time interval (Figure 1). If this was accomplished, the trial was considered successful. Otherwise, the trial was considered as a failure. Three types of targets were presented to the subjects, with 20 targets for each type. The targets of the first type were presented randomly on the unit-circle with different rotation angles. In this case, the subjects could complete the task by activating DOF2 only, and thus rotating the arrow on the screen. The targets of the second type were randomly displaced on the left and right side. Therefore, in this case, the tasks could be accomplished by moving the arrow to the left or right by activating DOF1 only. The targets of the third type were placed on the entire working interface so that the subjects had to simultaneously control both DOF1 and DOF2 (position control mode). Figure 1 illustrates these three types of targets. To fairly assess the performance of the methods, the order of the targets was presented randomly for each subject. In addition, the order of the tested algorithms was also randomly selected and the subject was blind to the algorithm used. The comparison between LR, NMF and the proposed SNMF was done for able-bodied subjects only whereas only SNMF and NMF were compared in amputees. This choice was due to time constraints in the experiments with amputees.



**Table 1. Identifications of the Online Performance Indexes**

Throughput (TP, [bit/s])	Ratio between the task difficulty index of each target and the completion time
Completion Time (CT,[s])	The time it took the subject to complete the successful attempt
Efficiency Coefficient (EC, [%])	Ratio between the length of the optimal path from the initial point to the target and the actual trajectory realized (100% indicates a perfect execution)
Overshoots (O)	Number of occurrences that the tip of the arrow passes through the target before the dwelling time was reached

To quantitatively assess the algorithm performance, four indices were calculated: task throughput (TP), task completion time (CT), efficiency coefficient (EC), and overshoots (O) [31] (Table 1).

### 2.5. Statistical Analysis

In all ANOVA tests (2-sided tests), the full model was conducted. The main factors of the analysis were the target type (single DOF activations and two DOFs activation), and the algorithm (LR, NMF and SNMF). The subject was a random factor. First, the significant interaction between the two factors (target type and algorithm) was tested. When a significant interaction was detected, focused one-way ANOVA were performed by fixing the level of one of the interacting factors. In case of no significant interactions, the effects of the interactions were pooled and only the effects of the main factors were analyzed. When statistical significance was detected, the Tukey-Kramer multiple comparison with Bonferroni correction was performed to identify the order of the levels of that factor. The significance level was set to 0.05 for all tests.

### 2.6. Evaluation of the Sparseness of the Control Signals

We used an average signal-to-noise ratio (*ASNR*) to characterize the factorization solutions obtained with NMF and SNMF. During trials with activation of single DOFs in the test set, the single trial SNR was the ratio between the intended control signal (integrated over time) and the unintended control signal:

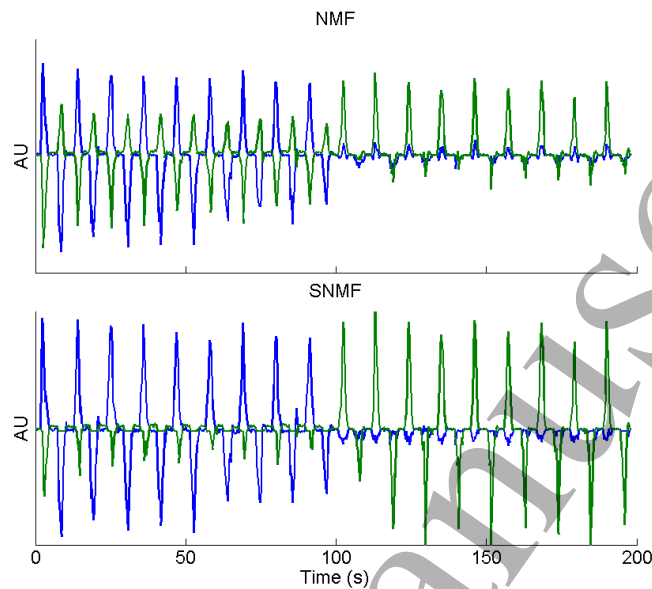
$$SNR(i) = \frac{\sum_{t=T_i+1}^{T_{i+1}} \tilde{F}_{int}(t)}{\sum_{t=T_i+1}^{T_{i+1}} \tilde{F}_{uint}(t)} \quad (9)$$

where  $i$  indicates the trial index,  $[T_i+1, T_{i+1}]$  is the time interval of the  $i$ -th trial, and the subscript “*int*” and “*uint*” of  $\tilde{F}(t)$  respectively represent the intended and unintended control signal at time  $t$ . When a single DOF activation is required, the intended control signal is the one corresponding to the DOF to be activated and the unintended control signal is the signal activation the other DOF. Then, the *ASNR* over  $I$  trials was obtained by averaging the single trial *SNR*:

$$ASNR(i) = \frac{1}{I} \sum_{i=1}^I SNR(i) \quad (10)$$

### 3. Experimental Results

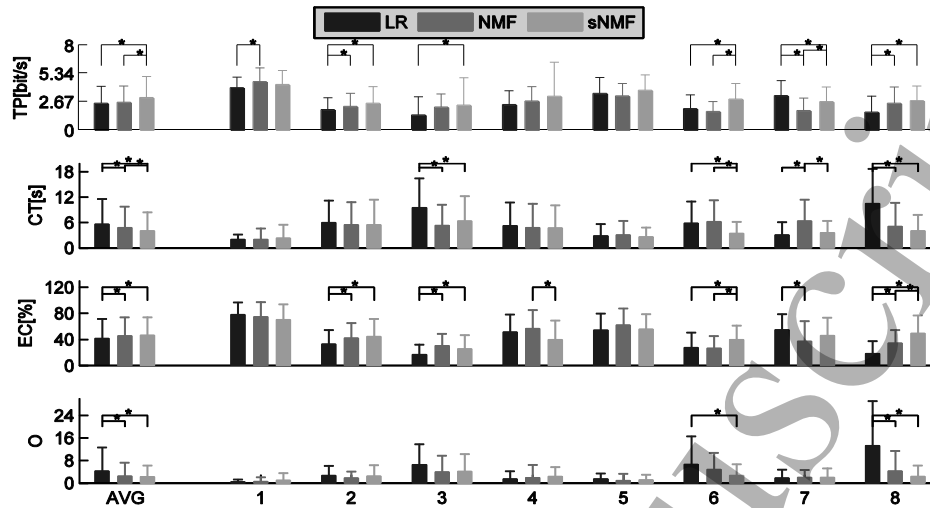
#### 3.1. Significance of Sparseness for Control Signals



**Figure 3. The estimated differential control signal of NMF and SNMF from RMS-based EMG. The two colors mean two DOFs. The coefficient above 0 and below 0 respectively means the positive and negative direction of one DOF. AU means arbitrary unit.**

First we illustrate the effect of sparseness constraint on the control signals when using NMF and SNMF. For this purpose we show the control signals obtained by the two methods when using the same set of signals for the factorization. Specifically, only signals generated by single-DOF activations of one of the subjects were used for factorization, according to the needs for NMF. In all the experiments, there were 9 trials of DOF1 (including Extension and Flexion), and 9 trials of DOF2 (including Supination and Pronation). As mentioned previously, for SNMF, we need to choose the optimal parameter  $\lambda$  through cross-validation. The detailed selection procedure of  $\lambda_{\text{opt}}$  is as follows. We first collected offline trials (for each subject) and randomly split them into K-folds (K=3 in this paper). Then, we took each 2 of the 3 folds (2/3 trials) to form the training set and the remaining fold (1/3 trials) to form the validation set. By rotating the validation, we obtained a total of 3 training sets and the respective 3 validation sets for each subject. After that, we predefined a series of values of  $\lambda$  (e.g., from 0.001 to 10). The range of  $\lambda$  can be arbitrary.  $\lambda$  determines the degree of sparseness (a smaller  $\lambda$  generates less sparseness). For each  $\lambda$ , we used each of the training set to learn the basis function via Eq.(2), and applied them to the respective validation dataset to obtain the control signal and the ASNR. Thus, we had 3 ASNRs for each  $\lambda$  and average them as the final ASNR. On evaluating all  $\lambda$ s, we selected the optimal  $\lambda$  as that associated with the minimal ASNR. Finally, we used the learnt optimal  $\lambda$  (among the predefined scope) for online testing.

Figure 3 shows the differential control signals (as described in Eq. (7)) of one subject generated by NMF and SNMF during testing with the user attempting to control individual DOFs. For this example, NMF and SNMF were based on factorizing the EMG generated during single DOF activations, as requested by NMF. When using SNMF, the control signal corresponding to the unintended DOF was substantially more suppressed than when using NMF. With NMF, in some cases, the control signal of the unintended DOF had similar magnitude as that of the intended DOF. According to the representative results in Figure 3, the resulting ASNR for NMF was 2.30 while for SNMF it was 7.16. Therefore, even when single-DOF activations were used for deriving the matrix  $\mathbf{W}$ , the sparseness constraint led to a superior solution with respect to NMF by reducing the undesirable activations of the unintended DOF.



**Figure 4. Summary of the online performance measures of 8 able-bodied subjects. From top to down, are the indices throughput, completion time, efficiency coefficient, and overshoots. “\*” indicates statistical**

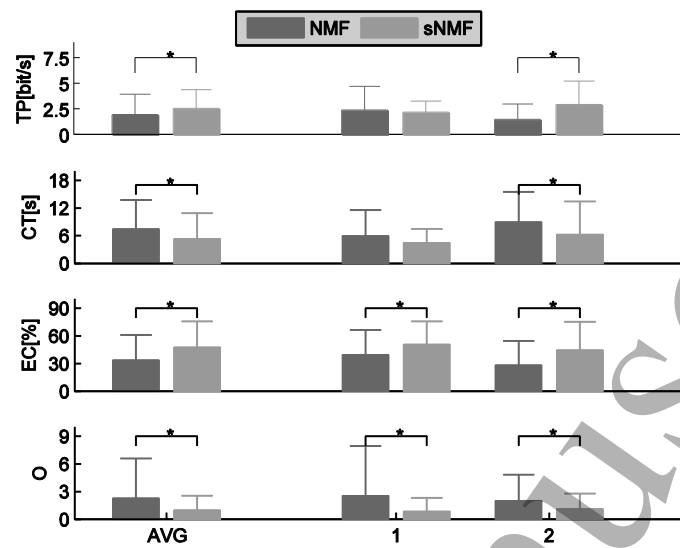
### 3.2. Online Control Performance

The NMF, SNMF and LR were compared in the online performance using the same set of signals for the extraction of the matrix  $W$ . Since NMF requires single-DOF activations, these signals were first obtained from the single-DOF trials (ideal conditions for NMF). The results in this condition will be shown first and will be followed by those obtained when using a combination of DOF as input for the factorization.

For single-DOF trials in the factorization, the statistical results of ANOVA for LR, NMF, and SNMF for able-bodied subjects are summarized in Figure 4. In all ANOVA tests, the full model was tested first. The full model ANOVA for the 4 performance indices found no significance interaction between the two main factors (target type and algorithm) ( $p=0.464$ ,  $p=0.153$ ,  $p=0.207$ , and  $p=0.082$  for TP, CT, EC, and O, respectively). Therefore, the reduced ANOVA was tested only for the main factors (target type and algorithm), and Bonferroni comparison was used to show the statistical significance. The TP was significantly greater for SNMF ( $3.01 \pm 1.99$  bit/s) than NMF ( $2.58 \pm 1.51$  bit/s;  $p<0.001$ ) and LR ( $2.47 \pm 1.61$  bit/s;  $p<0.001$ ), whereas it was similar for NMF and LR ( $p=0.794$ ). The task completion time (CT) was shorter with SNMF ( $4.06 \pm 4.40$  s) than NMF ( $4.78 \pm 4.98$  s;  $p=0.046$ ) and LR ( $5.61 \pm 5.94$  s;  $p<0.001$ ), with NMF resulting in significantly shorter CT than LR ( $p=0.016$ ). The efficiency coefficient (EC) was similar for SNMF ( $45.97 \pm 28.22\%$ ) and NMF ( $45.20 \pm 28.86\%$ ), which were both superior than LR ( $41.39 \pm 29.91\%$ ;  $p=0.007$  and  $p=0.033$ ). Similarly, the overshoot (O) was smaller for SNMF ( $2.26 \pm 3.90$ ) and NMF ( $2.50 \pm 4.73$ ) than for LR ( $4.27 \pm 8.35$ ;  $p<0.001$  for both).

To summarize, for able-bodied subjects, the proposed SNMF outperformed LR and NMF for TP and CT and resulted in similar EC and O as NMF (both being superior than LR).

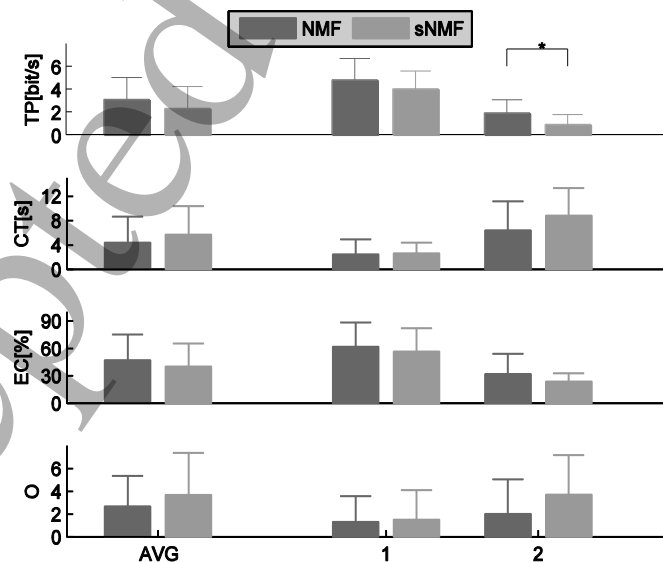
The statistical results for the amputee patients are shown in Figure 5. The TP was  $1.92 \pm 1.99$  bit/s (NMF) and  $2.53 \pm 1.83$  bit/s (SNMF); task completion time (CT) was  $7.44 \pm 6.28$  s (NMF) and  $5.33 \pm 5.58$  s (SNMF); efficiency coefficient (EC) was  $33.67 \pm 27.37\%$  (NMF) and  $47.62 \pm 28.27\%$  (SNMF); and overshoot (O) was  $2.27 \pm 4.31$  (NMF), and  $0.98 \pm 1.56$  (SNMF). There was no interaction between the target type and algorithm ( $p=0.941$ ,  $p=0.665$ ,  $p=0.062$ , and  $p=0.172$  for TP, CT, EC, and O, respectively).



**Figure 5. Summary of the online performance measures of 2 amputee subjects. From top to down are the indices throughput, completion time, efficiency coefficient, and overshoots. ‘\*’ indicates statistical significance ( $p < 0.05$ ).**

The online performance of SNMF was significantly better than that of NMF according to all 4 performance indices ( $p = 0.013$  for TP,  $p = 0.004$  for CT,  $p < 0.001$  for EC, and  $p = 0.006$  for O).

Finally, we tested the robustness of the solution provided by SNMF with mixed multi-DOF signals as input. For this test, we again compared SNMF and NMF. When NMF was trained (for the factorization) with multi-DOF data, the subjects were not able to control the interface and could not complete any task.



**Figure 6. Summary of the online performance measures of 2 able-bodied subjects with mixed multi-DOF signals as input for SNMF. From top to down, are the indices throughput, completion time, efficiency coefficient, and overshoots. ‘\*’ indicates statistical significance ( $p < 0.05$ ).**

1  
2  
3  
4  
5  
6  
7  
8  
9  
10  
11  
12  
13  
14  
15  
16  
17  
18  
19  
20  
21  
22  
23  
24  
25  
26  
27  
28  
29  
30  
31  
32  
33  
34  
35  
36  
37  
38  
39  
40  
41  
42  
43  
44  
45  
46  
47  
48  
49  
50  
51  
52  
53  
54  
55  
56  
57  
58  
59  
60

Conversely, the online control based on SNMF was possible. The results obtained by SNMF when applied to multi-DOF data for the factorization were compared with the results obtained by NMF when the factorization was performed using single-DOF data (as in the previous tests), which was the only condition for which control with NMF was possible. This comparison was conducted on two able-bodied subjects from the initial subject sample and its results are shown in Figure 6. There was no significant difference between the control by SNMF and NMF even though the first was trained by multi-DOF data (arbitrary movements of the user) and the second by single-DOF constrained activations.

Therefore, benefiting from the sparseness constraint in the factorization stage, SNMF allowed simultaneous and proportional myoelectric control independent on the data used for extracting  $W$ .

#### 4. Discussion

The proposed method provides a solution for simultaneous and proportional myoelectric control given EMG signals without labeling or any other constraint. Therefore, the method is basically unsupervised (only the ordering of the basis of the control signals is undetermined, but this ambiguity can be simply resolved in practice, as discussed in Methods). It is based on the assumption that in the muscle signal domain, activations can be obtained as linear combinations of basis functions. The best basis functions are those corresponding to single-DOF since these are naturally associated to the physiological muscle activation determining the corresponding tasks. However, extracting a set of basis functions from EMG factorization poses indeterminacy when no further conditions are imposed. Indeed, the same space of activations in the muscle signal domain can be covered by any linear combination of the activation signals corresponding to the single-DOFs. For these reasons, NMF applied in myoelectric control requires that the basis functions are extracted one by one from signals generated during single-DOF tasks of the user (DOF-wise training strategy). The proposed SNMF approach eliminates this need since, from a set of EMG signals generated by an arbitrary task, it selects the factorization with maximum sparseness, which is the one corresponding to basis functions associated to the single-DOFs.

In addition to the advantage of a better set of basis functions even when the signals used are from single-DOF activations, the SNMF method can be used for factorizing signals without the constraint of being generated from single-DOF data (since the activations cannot be in practice ideal single-DOF anyway). Therefore, the same solution will be achieved for a large repertoire of signals, in an unsupervised way.

Sparse representation algorithms have several applications in signal processing. Sparse representation Classification (SRC) methods can resist the presence of noisy data and preserve high classification accuracy for corrupted data [34], as also shown for EEG and EMG processing [35,36].

#### 5. Conclusion

We proposed a SNMF scheme for robust and concurrent extraction of basis functions for myoelectric control in upper limb prostheses with an unsupervised scheme, which not only simplifies the training stage for the users, but also improves the quality of the control. This factorization scheme has advantages over the classic NMF in that it selects the sparse solution among infinite possible solutions. In this way, it does not need a preset calibration phase of constraint tasks by the user (the DOF-wise based training scheme) but rather the constraint on the solution is mathematically imposed. This new scheme has been compared to NMF and LR and proved to be superior to these methods when using single-DOF activations for the factorization (ideal condition for NMF). In addition, the method can be used by factorizing EMG signals from arbitrary tasks made of combinations of DOFs.

In conclusion, we have proposed and validated a factorization algorithm for myoelectric control that has superior performance than previously tested methods for the simultaneous and proportional control of multiple DOFs and may pave the way to adaptive myoelectric control systems.

## Acknowledgement

This work was supported financially by the EU project INPUT (Contract Nr. 687795), the National Key Basic Research Development Program of China (2013CB329505), Discovery Grant from Natural Science and Engineering Research Council of Canada (RGPIN-2016-04137), and the Shenzhen High-level Oversea Talent Program (Shenzhen Peacock Plan) Grant (KQCX2015033117354152).

## Reference

- [1] Young A J, Smith L H, Rouse E J and Hargrove L J 2013 Classification of simultaneous movements using surface EMG pattern recognition *IEEE Trans. Biomed. Eng.* **60** 1250–8
- [2] Hahne J M, Graimann B and Muller K R 2012 Spatial filtering for robust myoelectric control *IEEE Trans. Biomed. Eng.* **59** 1436–43
- [3] Raspopovic S, Capogrosso M, Petrini F M, Bonizzato M, Rigosa J, Di Pino G, Carpaneto J, Controzzi M, Boretius T, Fernandez E, Granata G, Oddo C M, Citi L, Ciancio A L, Cipriani C, Carrozza M C, Jensen W, Guglielmelli E, Stieglitz T, Rossini P M and Micera S 2014 Restoring natural sensory feedback in real-time bidirectional hand prostheses. *Sci. Transl. Med.* **6**222ra19
- [4] Tan D W, Schiefer M A, Keith M W, Anderson J R, Tyler J and Tyler D J 2014 A neural interface provides long-term stable natural touch perception *Sci. Transl. Med.* **6**257ra138-257ra138
- [5] Stango A, Member S, Negro F, Farina D and Member S 2014 Spatial Correlation of High Density EMG Signals Provides Features Robust to Electrode Number and Shift in Pattern Recognition for Myocontrol **4320**
- [6] Kuiken T A, Li G, Lock B A, Lipschutz R D, Miller L A, Stubblefield K A and Englehart K B 2009 Targeted muscle reinnervation for real-time myoelectric control of multifunction artificial arms. *JAMA* **301** 619–28
- [7] Cheesborough J E, Smith L H, Kuiken T A and Dumanian G A 2015 Targeted muscle reinnervation and advanced prosthetic arms *Semin. Plast. Surg.* **29** 62–72
- [8] Tkach D C, Young A J, Smith L H, Rouse E J and Hargrove L J 2014 Real-Time and Offline Performance of Pattern Recognition Myoelectric Control Using a Generic Electrode Grid With Targeted Muscle Reinnervation Patients *IEEE Trans. Neural Syst. Rehabil. Eng.* **22** 727–34
- [9] Jiang N, Englehart K B and Parker P a. 2009 Extracting simultaneous and proportional neural control information for multiple-dof prostheses from the surface electromyographic signal *IEEE Trans. Biomed. Eng.* **56** 1070–80
- [10] Farina D, Jiang N, Rehbaum H, Holobar A, Graimann B, Dietl H and Aszmann O C 2014 The extraction of neural information from the surface EMG for the control of upper-limb prostheses: Emerging avenues and challenges *IEEE Trans. Neural Syst. Rehabil. Eng.* **22** 797–809
- [11] Lee D D and Seung H S 2001 Algorithms for non-negative matrix factorization *Adv. Neural Inf. Process. Syst.* **13** 556–62
- [12] Lee D D and Seung H S 1999 Learning the parts of objects by non-negative matrix factorization. *Nature* **401** 788–91
- [13] Lin C, Wang B, Jiang N and Farina D 2014 Simultaneous and Proportional Multiple Degrees of Freedom Control of Active Prostheses with Sparseness Constraint Non-Negative Matrix Factorization of EMG Signals, Bernstein Conference, Goettingen, Germany.
- [14] He X, Yan S, Hu Y, Niyogi P and Zhang H 2005 Face Recognition Using Laplacianfaces **27** 328–40
- [15] Ferrari S, Ferrigno G, Piuri V and Borghese N A 2007 Reducing and Filtering Point Clouds With Enhanced Vector Quantization **18** 161–77
- [16] Xu W, Gong Y and Road N W Document Clustering by Concept Factorization 202–9
- [17] Li S Z, Hou X W, Zhang H J, Zhang H J and Cheng Q S C Q S 2001 Learning spatially localized, parts-based representation *Proc. 2001 IEEE Comput. Soc. Conf. Comput. Vis. Pattern Recognition. CVPR 2001* **1** 1–6
- [18] Kuang D and Park H 2013 Fast rank-2 nonnegative matrix factorization for hierarchical document clustering *Proc. 19th ACM SIGKDD Int. Conf. Knowl. Discov. data Min. - KDD '13* 739

- 1  
2  
3  
4  
5  
6  
7  
8  
9  
10  
11  
12  
13  
14  
15  
16  
17  
18  
19  
20  
21  
22  
23  
24  
25  
26  
27  
28  
29  
30  
31  
32  
33  
34  
35  
36  
37  
38  
39  
40  
41  
42  
43  
44  
45  
46  
47  
48  
49  
50  
51  
52  
53  
54  
55  
56  
57  
58  
59  
60
- [19] Kuang D, Yun S and Park H 2014 SymNMF : nonnegative low-rank approximation of a similarity matrix for graph clustering
- [20] Kim H and Park H 2007 Sparse non-negative matrix factorizations via alternating non-negativity-constrained least squares for microarray data analysis *Bioinformatics* **23** 1495–502
- [21] Wang Y-X and Zhang Y-J 2013 Nonnegative Matrix Factorization: A comprehensive review *Knowl. Data Eng. IEEE Trans.* **25** 1336–53
- [22] Zhi R, Flierl M, Ruan Q and Kleijn W B 2011 Graph-preserving sparse nonnegative matrix factorization with application to facial expression recognition *IEEE Trans. Syst. Man, Cybern. Part B Cybern.* **41** 38–52
- [23] Yang A Y, Zhou Z, Ganesh A, Sastry S S and Ma Y 2010 Fast L1-Minimization Algorithms For Robust Face Recognition *2010 IEEE Int. Conf. Image Process.* **6** 1849–52
- [24] Kim H and Park H 2007 Sparse non-negative matrix factorizations via alternating non-negativity-constrained least squares for microarray data analysis *Bioinformatics* **23** 1495–502
- [25] Cui Z, Cao Z, Yang J and Feng J 2014 SAR Target Recognition Using Nonnegative Matrix Factorization with L 1 / 2 Constraint 382–6
- [26] Zhang C, Liu J, Liang C, Xue Z, Pang J and Huang Q 2014 Image classification by non-negative sparse coding, correlation constrained low-rank and sparse decomposition *Comput. Vis. Image Underst.* **123** 14–22
- [27] Yang Z, Zhou G, Xie S, Ding S, Yang J-M and Zhang J 2011 Blind spectral unmixing based on sparse nonnegative matrix factorization. *IEEE Trans. Image Process.* **20** 1112–25
- [28] Mohammadiha N and Leijon A 2009 Nonnegative matrix factorization using projected gradient algorithms with sparseness constraints *IEEE Int. Symp. Signal Process. Inf. Technol. ISSPIT 2009* 418–23
- [29] Morup M, Madsen K H and Hansen L K 2008 Approximate  $L_0$  constrained non-negative matrix and tensor factorization *2008 IEEE Int. Symp. Circuits Syst.* **0** 1328–31
- [30] Jiang N, Rehbaum H, Vujaklija I, Graimann B and Farina D 2014 Intuitive, online, simultaneous, and proportional myoelectric control over two degrees-of-freedom in upper limb amputees. *IEEE Trans. Neural Syst. Rehabil. Eng.* **22** 501–10
- [31] Jiang N, Vujaklija I, Rehbaum H, Graimann B and Farina D 2014 Is accurate mapping of EMG signals on kinematics needed for precise online myoelectric control? *IEEE Trans. Neural Syst. Rehabil. Eng.* **22** 549–58
- [32] Hahne J M, Bießmann F, Jiang N, Rehbaum H, Member S, Farina D, Member S, Meinecke F C, Müller K and Parra L C 2014 Linear and Nonlinear Regression Techniques for Simultaneous and Proportional Myoelectric Control **22** 269–79
- [33] Choi C and Kim J 2011 Medical Engineering & Physics Synergy matrices to estimate fluid wrist movements by surface electromyography *Med. Eng. Phys.* **33** 916–23
- [34] Wright J, Yang A Y, Ganesh A, Sastry S S and Yi Ma 2009 Robust Face Recognition via Sparse Representation *IEEE Trans. Pattern Anal. Mach. Intell.* **31** 210–27
- [35] Betthausen J L, Hunt C L, Osborn L E, Masters M R, Levay G, Kaliki R R and Thakor N V. 2017 Limb Position Tolerant Pattern Recognition for Myoelectric Prosthesis Control with Adaptive Sparse Representations from Extreme Learning *IEEE Trans. Biomed. Eng.* 1–1
- [36] Li Y, Yu Z L, Bi N, Xu Y, Gu Z and Amari S 2014 Sparse Representation for Brain Signal Processing: A tutorial on methods and applications *IEEE Signal Process. Mag.* **31** 96–106