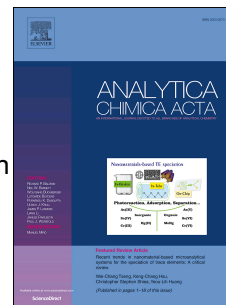


Accepted Manuscript

Direct Immersion Solid-Phase Microextraction Analysis of Multi-class Contaminants in Edible Seaweeds by Gas Chromatography-Mass Spectrometry

Li Zhang, Emanuela Gionfriddo, Vinicius Acquaro, Jr., Janusz Pawliszyn



PII: S0003-2670(18)30698-6

DOI: [10.1016/j.aca.2018.05.066](https://doi.org/10.1016/j.aca.2018.05.066)

Reference: ACA 236003

To appear in: *Analytica Chimica Acta*

Received Date: 29 March 2018

Revised Date: 23 May 2018

Accepted Date: 25 May 2018

Please cite this article as: L. Zhang, E. Gionfriddo, V. Acquaro Jr., J. Pawliszyn, Direct Immersion Solid-Phase Microextraction Analysis of Multi-class Contaminants in Edible Seaweeds by Gas Chromatography-Mass Spectrometry, *Analytica Chimica Acta* (2018), doi: 10.1016/j.aca.2018.05.066.

This is a PDF file of an unedited manuscript that has been accepted for publication. As a service to our customers we are providing this early version of the manuscript. The manuscript will undergo copyediting, typesetting, and review of the resulting proof before it is published in its final form. Please note that during the production process errors may be discovered which could affect the content, and all legal disclaimers that apply to the journal pertain.



ACCEPTED MANUSCRIPT

Direct Immersion Solid-Phase Microextraction Analysis of Multi-class Contaminants in Edible Seaweeds by Gas Chromatography-Mass Spectrometry

Li Zhang^{1,2}, Emanuela Gionfriddo^{1,3}, Vinicius Acquaro Jr^{1,4}, Janusz Pawliszyn^{1,*}

1. Department of Chemistry, University of Waterloo, Waterloo, Ontario, Canada

2. Fourth Institute of Oceanography, State Oceanic Administration, Beihai, Guangxi, China

3. Department of Chemistry and Biochemistry, The University of Toledo, Toledo, OH, USA

4. Departamento de Química, Faculdade de Filosofia, Ciências e Letras de Ribeirão Preto, Universidade de São Paulo, São Paulo, Brazil

*Corresponding author: Janusz Pawliszyn

200 University Avenue West, N2L 3G1 Waterloo, Ontario, Canada

Tel.: +1 519 8884641; fax: +1 519 7460435; Email: janusz@uwaterloo.ca

Abstract

The present work aimed at the development of a simple and accurate direct immersion-solidphase microextraction-gas-chromatography-mass spectrometry (DI-SPME-GC-MS) method for simultaneous determination of PAHs, PCBs, and pesticide residues in edible seaweeds. As the target contaminants possess a wide range of physical-chemical properties, multivariate experimental design was used for method optimization. In particular, two different methods were optimized and validated: one that allows for simultaneous determination of all targets, and an ad hoc method for determination of hydrophobic analytes, a class that often poses a challenge for extraction from food matrices. Optimum conditions suitable for simultaneous quantitation of all targeted compounds, namely buffer at pH=7.0, 20% acetone (v/v), 10% NaCl (w/w), 0.02% NaN₃, 60 min DI extraction at 55 °C, and 20 min desorption at 270 °C, afforded limits of quantitation (LOQs) in the range of 1-30 µg kg⁻¹, a wide linear range of 5-2000 µg kg⁻¹, the attainment of satisfactory determination coefficients ($R^2 > 0.99$) with no significant lack of fit ($p > 0.05$) at the 5% level, and satisfactory accuracy and precision values. By modifying the extraction conditions to favor extraction of the most hydrophobic analytes (e.g. higher amount

29 of organic modifier and pH, and lower salt content) lower LOQs were obtained for these
30 compounds ranging from 0.2-13.3 $\mu\text{g kg}^{-1}$. The established methods were then used for screening
31 of commercial, edible dry seaweeds, with PCBs ($\leq 16.0 \text{ ng g}^{-1}$) and PAHs ($\leq 15.5 \text{ ng g}^{-1}$) detected
32 in some samples. This method overcomes most challenges commonly encountered in dry sample
33 analysis applications, and represents the first report of a DI-SPME method employing the matrix-
34 compatible fiber for simultaneous multiclass and multiresidue analysis of seaweeds.

35 Keywords: Matrix-compatible SPME; Pesticides; Polycyclic aromatic hydrocarbons (PAHs);
36 Polychlorinated biphenyls (PCBs); Multi-residue analysis; Dry seaweed

37

38 1. Introduction

39 Edible seaweeds, such as brown, green, and red seaweeds, among other varieties, represent
40 a well-known source of sustenance, and are often considered a staple in many cuisines of Asian
41 origin [1]. From a nutritional point of view, seaweeds are a low-calorie food, containing
42 significant quantities of proteins, vitamins (A, E, C, and K), essential unsaturated fatty acids, and
43 minerals, as well as bioactive compounds with known antioxidant, antimutagenic, and
44 anticoagulant properties [2, 3]. Furthermore, seaweeds are a valuable source of dietary fiber;
45 according to a previous study, an 8 g serving of dry seaweed can provide up to 12.5% of a
46 person's daily fiber needs [4]. Indeed, the dietary value of edible seaweeds has prompted a large
47 increase in their consumption as a healthy food worldwide in recent years, as well as led to the
48 development of various seaweed-based industries [5].

49 However, seaweeds are inevitably exposed to the ubiquitous presence of organic pollutants
50 such as polyaromatic hydrocarbons (PAHs), polychlorinated biphenyls (PCBs), and various
51 pesticides, compounds that derive from both natural and anthropogenic sources, and are known
52 to pose a health hazard [6, 7]. PAHs, which include a large group of over 200 different
53 compounds, are categorized as compounds containing two or more fused benzene rings. Some
54 of these compounds, such as benzo[a]pyrene, are known carcinogens, while others have been
55 indicated as suspected carcinogens [6-9]. The U.S. Environmental Protection Agency (EPA-USA)
56 considers 16 PAHs as priority organic pollutants; as such, these compounds have been
57 extensively monitored [6, 10, 11]. PCBs are a family of compounds comprised of 209 chemically

58 related congeners that were widely used more than 25 years ago. Owing to their insulating and
59 fire-retardant properties, PCBs were used in a variety of industrial applications, such as
60 microscope oils, electrical insulators, capacitors, and electrical appliances [12]. They were also
61 widely sprayed on dirt roads as a dust-control measure until some of the unintended
62 consequences from their widespread use were unearthed, prompting their decreased use
63 worldwide, as well as the establishment of CBC production bans in many countries. Indeed,
64 exposure to PCBs has been implicated as a risk factor for “endocrine (hormone) disruption”,
65 which can lead to infertility, the development of certain types of cancer, and other hormone-
66 related disorders [13]. Pesticides such as certain organophosphates (OP), carbamates (CAR), and
67 pyrethroids (PYR) are widely employed in the agricultural and aquaculture industries as pest and
68 disease control measures [14, 15]. Due to their widespread use, the potential human health
69 hazards (neurotoxicity, among others) posed by these compounds have increasingly become a
70 focus of public attention [16]. Owing to their hydrophobicity, PAHs, PCBs, and pesticides tend
71 to associate to particulate matters; in this regard, within the context of our discussion, all three
72 groups of compounds have been previously detected in seaweeds [16, 17]. Regulation (EC) No
73 396/2005 of the European Parliament only sets maximum residue levels (MRL) for some
74 pesticides, ranging from $10 \mu\text{g kg}^{-1}$ to $50 \mu\text{g kg}^{-1}$ in edible seaweeds [18]. Alternatively, only
75 scarce information is available on the limitation levels of PAH and PCB contaminants in
76 seaweed. In view of the above, the development of effective extraction and enrichment
77 techniques to determine the levels of the above pollutants present in edible seaweeds is of great
78 interest.

79 Currently, most reports available in the literature addressing seaweed analysis have the
80 detection of heavy metals as their focus. For determination of organic residues in seaweeds,
81 liquid-liquid extraction, such as Soxhlet [19], pressured liquid extraction (PLE) [20], microwave-
82 assisted extraction (MAE) [21], or matrix solid-phase dispersion (MSPD) [5] have been reported
83 as methods of choice – approaches that unavoidably employ large volumes of organic solvents,
84 and which require pre-concentration and clean-up steps. As a result, such methods are tedious,
85 time-consuming, and not environmentally friendly. Conversely, solid-phase microextraction
86 (SPME), which has been successfully applied towards analyses of organic contaminants in
87 various matrices [22, 23], integrates sampling, extraction, concentration, and sample introduction
88 into a single, low-solvent consuming and automatable step. Nonetheless, very few reports

89 mention the use of SPME for analysis of organic contaminants in dry seaweeds, especially for
90 poorly volatile compounds, such as PAHs, PCBs, and pesticides.

91 Despite the numerous advantages presented by SPME, including its simplicity of operation,
92 development of SPME methods for complex matrices, such as seaweeds, requires careful method
93 optimization, including as a first step, the selection of mode of extraction. Since the majority of
94 compounds studied in this work bear poor volatility, direct-immersion SPME (DI-SPME), in
95 which the extraction phase is placed directly into contact with the sample, was selected as mode
96 of extraction with aims to attain higher method sensitivity as well as better representativeness of
97 analytes extracted from the seaweed matrix. The ideal features of a fiber coating for DI-SPME
98 should be matrix compatibility, robustness, and good affinity towards the analytes of interest.
99 Within this context, the analytes targeted in this work belong to three different chemical classes,
100 and are characterized by widely different physiochemical properties, certainly posing a challenge
101 for SPME analysis. A matrix-compatible coating (namely PDMS/DVB/PDMS) was developed
102 with the purpose of enabling DI-SPME in complex matrices such as food commodities [24]. The
103 robustness and endurance of this new coating were evaluated in various food samples, such as
104 fruits [25-27] (i.e. grape, strawberries and avocado pulp) and raw blended vegetables[28] (i.e.
105 spinach, tomato, and carrot), that present different analytical challenges such as water content,
106 pigmentation, interfering matrix compounds, and vegetable texture. In all tested matrices, the
107 PDMS/DVB/PDMS fiber showed excellent durability and robustness, allowing for over 100
108 consecutive extractions. Based on the above development, the currently presented work aimed at
109 the optimization and development of a DI-SPME-GC-MS method for simultaneous analysis of
110 multiresidue PAHs, PCBs, and pesticides in edible seaweeds. In order to achieve an accurate and
111 robust analytical method by DI-SPME, multivariate approaches such as Plackett-Burman and
112 Central Composite Design (CCD) were employed to screen and optimize the most relevant
113 parameters affecting extraction efficiency (such as pH, ionic strength, organic solvent content,
114 sample temperature, and extraction time). As the studied compounds have a wide range of
115 polarities, with most bearing high hydrophobicity, two optimized DI-SPME protocols — one
116 aimed at broad-spectrum detection, and one targeting more hydrophobic compounds — were
117 evaluated for their suitability towards the currently discussed application. An evaluation of the
118 abovementioned DI-SPME conditions was carried out as a means to provide information to
119 future users on how to tune their SPME method based on the physiochemical properties of the

120 targeted compounds. Despite the challenges encountered by this method, to the best of these
121 authors' knowledge, this is the first report of a DI-SPME method using matrix-compatible fibers
122 for multiclass and multiresidue analysis of edible seaweed. Further, the established method was
123 successfully applied to the analysis of commercial samples.

124 **2 Experimental section**

125 2.1 Materials and reagents

126 All employed solvents were of HPLC grade. Acetonitrile (ACN) and acetone were
127 purchased from Fisher Scientific (Ottawa, ON, Canada). Sodium chloride and sodium azide were
128 purchased from Sigma Aldrich (Oakville, Ontario, Canada). PDMS/DVB/PDMS (SPME-OC
129 fiber assembly) 75 μm (Coating thickness includes 65 μm coating + 10 μm OC (overcoating))
130 fibers were purchased from Supelco (Bellefonte, PA, USA). Dry edible seaweeds (Wakame and
131 Nori) were purchased at local markets in Waterloo(ON, Canada).

132 All standards were purchased from Sigma Aldrich (Oakville, ON, Canada), Accustandard
133 (New Haven, CT, USA), and Cambridge Isotope Laboratories (Montreal, Quebec, Canada). With
134 the exception of PCBs (Congeners Mix 3, 10 $\mu\text{g mL}^{-1}$ in Isooctane), PAHs (Calibration Mix, 10
135 $\mu\text{g mL}^{-1}$ in acetonitrile), lamda-cyhalothrin (100 $\mu\text{g mL}^{-1}$ in acetonitrile), and (phenoxy- $^{13}\text{C}_6$)-cis-
136 permethrin, all employed standards were of a purity higher than 94%. Detailed compound
137 information for all analytes used in this work can be found in Table S1of Supporting
138 ISInformation.

139 Individual solutions of pesticide standards were prepared in acetonitrile at 10 mg mL⁻¹.
140 Internal standard (naphthalene-d8, benzo[a]anthracene-d12, Acenaphthene-d10, Phenanthrene-
141 d10, Chrysene-d12, Benzo[a]pyrene-d12, PCB 30, PCB 103, PCB 169, and (diethyl-D10)-
142 chlorpyrifos) solutions were prepared at 1 mg mL⁻¹ in acetonitrile. All standard solutions were
143 stored in a freezer at -30 °C.

144 For method development steps, a series of mixed calibration solutions, ranging from 0.01
145 to 10 ng μL^{-1} (for PAHs and PCBs; seven levels) and 0.1 to 100 ng μL^{-1} (for pesticides; seven
146 levels), were prepared during method development to calculate amounts (in ng) extracted by
147 SPME for each analyte. Liquid injections of calibration solutions were carried out in triplicate.

148 During the method validation steps, spiking standard mixtures were firstly prepared
149 containing target analytes at 1000 $\mu\text{g mL}^{-1}$ (for pesticides), 10, 1 and 0.1 $\mu\text{g mL}^{-1}$ (for all
150 analytes), and internal standards were prepared at 5 $\mu\text{g mL}^{-1}$. Aliquots of the above mentioned
151 mixtures were spiked into blank seaweed samples to obtain related concentration levels required
152 for each validation part.

153 2.2 Instrumentation

154 Seaweed samples were grinded with the use of a Salton grinder CG1451 (Montreal,
155 Quebec, Canada). Sample pH was measured with a Mettler Toledo MP220 (Schwerzenbach,
156 Switzerland) pH meter. For homogenization of samples, a Benchmark BenchMixerTM (Edison,
157 NJ, USA) was employed.

158 GC-MS analysis was performed with an Agilent 7890B gas chromatography coupled to a
159 5977A mass spectrometer (Agilent Technologies, Mississauga, ON, Canada), equipped with a
160 Gerstel MultiPurpose Sampler (GERSTEL, Linthicum, MD, USA). Chromatographic separation
161 was performed in an HP-5 MS column (30 m \times 250 μm \times 0.25 μm). Helium was employed as
162 carrier gas, with a column flow at 1.0 mL min^{-1} . The oven temperature program was initially set
163 at 70 $^{\circ}\text{C}$ for 10 min, then ramped at 20 $^{\circ}\text{C min}^{-1}$ to 200 $^{\circ}\text{C}$ for 8 min. Next, it was ramped at
164 10 $^{\circ}\text{C min}^{-1}$ to 260 $^{\circ}\text{C}$ for 8 min, and then ramped at 10 $^{\circ}\text{C min}^{-1}$ to 300 $^{\circ}\text{C}$, at which point it was
165 held for 8 min, resulting in a total run time of 38 min. The injector (equipped with a deactivated
166 glass liner for SPME, 0.75mm i.d.) was maintained at 270 $^{\circ}\text{C}$ in splitless mode (the split valve
167 was opened for after 20 min in case of SPME desorption and after 1.0 min for liquid injections).
168 For the single quadrupole MS, the operational conditions were as follows: the transfer line, ion
169 source, and MS Quad temperature were 280 $^{\circ}\text{C}$, 230 $^{\circ}\text{C}$, and 150 $^{\circ}\text{C}$, respectively; the fixed
170 electron energy (EI), 70 eV; the mass range, m/z 50-400; acquisition rate, 50 Hz; detector
171 voltage, 1338 V. Retention times, as well as the selected quantifier ions obtained in the above
172 GC-MS conditions are presented in SI Table S2.

173

174 2.3 Preparation of spiked seaweed samples

175 Dry organic edible seaweed samples (previously analyzed for the absence of target
176 analytes) were grinded into powder and transferred to a glass container. In order to demonstrate
177 the suitability of the proposed method for different types of edible seaweed, a mixture of Nori

178 and Wakame (1:1, w/w) was used as matrix during SPME method optimization. 30 g of mixed
179 seaweed powder was weighed into a 250 mL glass jar, after which 40 mL of acetonitrile spiked
180 with the multi-class analytes were added. The mixture was then left to homogenize overnight
181 under agitation conditions so as to allow for sufficient analyte-matrix binding to occur. Spiked
182 samples were dried under N₂ flow in a fume hood and stored at +4 °C in refrigerator for 2 days
183 prior to extraction to simulate typical interaction conditions between seaweed and the target
184 compounds.

185 Spiking concentrations were carefully selected to guarantee enough sensitivity for all
186 analytes during the optimization processes (see SI Table S3). Blank seaweed samples were
187 prepared in the same manner as described above, with the exception that no standard was added.
188 All the samples needed for matrix matched calibration were prepared at according to the
189 abovementioned protocol properly adjusting the amount of spiked analytes and internal standards.

190

191 2.4 SPME procedure

192 Preliminary tests in spiked seaweed sample were performed by adjusting desorption
193 temperature and time. As the data indicated (not shown), desorption temperature at 270 °C and
194 desorption time of 15 min yielded no significant carryover.

195 0.25 g spiked seaweed sample and 8 mL dispersive solution were placed into a 10 mL glass
196 vial, and thoroughly vortexed for 1h prior to extraction. For initial SPME method development,
197 deionized water was added as dispersive solution. After 1 h mixing, a 1 min pre-extraction
198 incubation of the sample was performed at 40 °C in the agitation unit at 500 rpm, followed by a
199 30 min direct immersion extraction. Following extraction, the fiber was rinsed for 15 s in
200 deionized water, and then desorbed for 15 min at 270 °C.

201 For Plackett-Burman and CCD experiments, all SPME parameters were set as described
202 above, with the exception of the composition of the employed dispersive solutions, which was
203 varied to correspond to each experimental condition, in accordance with the experimental matrix.

204 Two SPME methods were optimized, one for simultaneous determination of all targeted
205 analytes (method#1), and a second one (method#2) optimized ad hoc for the most hydrophobic

206 analytes ($\text{LogP} > 5.2$). For method #1, optimized sample preparation conditions were: buffer at
207 $\text{pH} = 7.0$, containing 20% acetone (v/v), 10% NaCl (w/w) and 0.02% NaN_3 . Method #2 utilized a
208 buffer with $\text{pH} = 10.0$, containing 40% acetone (v/v) and 0.02% NaN_3 , aiming at enhanced
209 extraction of the more hydrophobic compounds. For both protocols the following procedure was
210 followed: after 1 h mixing, samples were incubated for 5 min at $55\text{ }^\circ\text{C}$ in the agitation unit at 600
211 rpm, followed by 60 min and 30 min direct immersion extractions, for method #1 and method #2
212 respectively. Following extraction, fibers were rinsed for 25 s in an acetone-water (2:8, v/v)
213 solution, and then desorbed for 20 min at $270\text{ }^\circ\text{C}$.

214 2.5 Optimization by experimental design

215 Aiming to optimize the analysis of 41 contaminants in seaweeds, a Plackett-Burman
216 experimental design (PBD) was selected to screen significant independent variables (factors)
217 impacting analysis. Following the identification of the most significant factors ($p\text{-value} < 0.05$), a
218 response surface methodology (RSM), namely central composite design (CCD) 2^4 , was used for
219 optimization. Data were processed through the software Statistica 13.0 (TIBCO® Statistica™,
220 CA, USA).

221 For PBD screening, evaluated factors and respective ranges included the following:
222 Extraction time (15 – 45 min), Salt content (0 – 20 %), Organic solvent (0 – 20 %, w/w),
223 Temperature (30 – $60\text{ }^\circ\text{C}$), Stirring rate (250 – 600 rpm), Incubation time (5 – 15 min) and pH (4
224 – 10), as shown in SI Table S4. Factor ranges were selected according to preliminary tests.

225 For CCD experiments, extraction temperature ($^\circ\text{C}$), organic solvent (mL), salt content (%),
226 and pH were evaluated. A total of 30 experiments were performed: eighteen in the factorial
227 points (-1, 1), eight in the axial points (-2, 2), and four in the central point (0). The studied
228 factors and their associated ranges can be found in SI Table S5.

229

230 **3 Results and discussion**

231 3.1 Evaluation of binding time as a factor in the extraction of target analytes from spiked
232 seaweeds

233 Significant differences in extraction results were observed between spiked seaweed
234 samples submitted to extraction at the same experimental conditions, but at different time
235 intervals after preparation of samples. According to Burford [29], “freshly” spiked analytes have
236 little time to interact with the sample matrix. As such, sufficient equilibration (binding) time
237 between spiked analyte and matrix should be allocated so as to attain samples that can be
238 considered representative of real contamination scenarios. To investigate optimum binding time
239 for analytes spiked on seaweeds, SPME was carried out at different binding periods (at +4 °C in
240 refrigerator) of the spiked sample, namely at 24, 48, and 72 hours following spiking of analytes.
241 The results are shown in Supporting Information Figure S1. For most target analytes, extraction
242 amounts were observed to decrease from 24 h to 48 h, but remain relatively unchanged as
243 binding time surpassed the 48 hour mark. Therefore, in order not to introduce errors associated
244 with insufficient binding time, “freshly” prepared spiked samples were allowed to equilibrate
245 with the spiked analytes at least 48 h prior to extraction.

246 3.2 Sample preparation optimization

247 3.2.1 Evaluation of sample to water ratio

248 Unlike most fresh vegetable and fruit matrices, small amounts of dry seaweed can expand
249 to large volumes once introduced to water. In DI-SPME analysis, when 10 mL vials are used for
250 sampling, care should be exercised to prepare total sample volumes. The volumes should be
251 large enough to enable the full immersion of the SPME fiber, but do not exceed 9 mL so as to
252 avoid contamination of the fiber holder due to spilling, that can result into contamination of the
253 GC injector. Moreover, samples should not be so dense as to incur SPME fiber breakage during
254 DI extraction in agitation conditions. As such, careful optimization of the seaweed-to-water ratio
255 was carried out, taking into account the abovementioned requirements, prior to SPME method
256 development. Results showed that when 0.25 g seaweed and 8 mL water were used, the sample
257 solution enabled suitable conditions for DI-SPME.

258 3.2.2 Degradation study of analytes in sample solution at room temperature

259 Envisioning the application of the proposed SPME to routine analysis, and thus foreseeing
260 the preparation of large amounts of samples that will inevitably be queued for analysis on an
261 autosampler rack, the currently presented work included an evaluation of whether any

262 degradation of analytes in the sample matrix occurred at room temperature. This assessment
263 constituted an important step in method development, as it allowed for proper tuning of the
264 sample preparation strategy, and thus circumvented the production of unreproducible and
265 unreliable data sets. For this assessment, after carrying out sample preparation as per procedures
266 previously outlined in this work (Sections 2.3 and 2.4), samples were placed in an autosampler
267 tray at room temperature. DI-SPME was then carried out under the following conditions:
268 immediately after vortexing (0 h), and after 6, 12, 24, and 48 h (n=3 for each set). Any potential
269 loss and/or degradation of analytes was assessed by evaluating variations in their extracted
270 amounts. According to the obtained results, a decreasing trend was observed for most analytes
271 from 12 h to 48 h (data not shown). Of note, pressure build up into the vial was noticed since the
272 septum of the sample vial was observed to 'bloat' after being placed at room temperature for 24
273 h; thus, the authors presume that biodegradation may have taken place during the investigated
274 waiting time.

275 Based on previous reports [30, 31], the dispersion solution was enriched with 0.02%
276 sodium azide (NaN_3) so as to prevent bacterial growth from occurring in the matrix media. The
277 abovementioned set of experiments was repeated to verify the efficacy of the bacterial growth
278 inhibitor added to the dispersion solution. Related results regarding the target analytes, namely
279 pesticides, PCBs, and PAHs, are shown in Figure 1(a-c). For almost all analytes, extraction
280 amounts remained relatively stable within 48 h, indicating that addition of 0.02% NaN_3
281 effectively prevented any form of analyte degradation/loss. Therefore, the prepared seaweed
282 samples that included addition of 0.02% NaN_3 were able to stand as long as 48 h at room
283 temperature prior to be submitted to extraction. Moreover, a comparison of extracted amounts of
284 each targeted analyte by DI-SPME, with or without addition of 0.02% NaN_3 , was also carried out
285 (immediately after vortexing) so as to investigate the effect of addition of NaN_3 on the extraction
286 of target analytes. The attained results revealed comparable analyte extraction amounts for both
287 extraction conditions, confirming that addition of NaN_3 does not significantly affect analyte
288 extraction (Supporting information Figure S2).

289 3.2.3 Optimization of pre-desorption rinsing of fiber coatings

290 As optimization of a pre-desorption rinsing step constitutes a crucial step in the
291 development of a reliable DI-SPME protocol, preliminary studies were performed using spiked

292 seaweeds in order to select the most suitable rinsing conditions. According to a previous study,
293 acetone showed good capability in removing oily residues from coating surfaces [27].
294 Considering that seaweed, as a complex matrix, contains abundant unsaturated fatty acids,
295 proteins, and pigments, among other possible interfering constituents, acetone was selected as
296 organic solvent for the rinsing step. Moreover, five different ratios of acetone to water were
297 tested as rinsing solutions, namely water, acetone-water (1:9, v/v), acetone-water (2:8, v/v),
298 acetone-water (1:1, v/v) and acetone-water (9:1, v/v). For each rinsing solution, three different
299 rinsing times, 5 s, 15 s and 25 s, were tested. The tested procedures are summarized in Figure S3
300 (Supporting Information). Results were compared in terms of average extraction amounts of
301 analytes, as well as in terms of SPME fiber and glass liner cleanliness. Although longer rinsing
302 times may afford cleaner fibers, extended fiber exposure to the rinsing solution may also lead to
303 loss of analytes extracted onto the fiber. Thus, when optimizing this parameter, a suitable
304 compromise must be made between extraction sensitivity and effective cleaning of the coating
305 surface.

306 In the current work, best results were achieved when rinsing time was increased to 25 s for
307 all rinsing solutions, with the exception of acetone-water (9:1, v/v), for which a rinsing time of
308 15 s was deemed as most suitable. Detailed comparisons of data pertaining to these experiments
309 can be found in Supporting Information Figure S4 (a-e).

310 While addition of acetone in the rinsing solution can aid in the removal of co-extracted
311 matrix macro-components, it may also act as an additional phase, competing with the SPME
312 coating for the partition of analytes by inducing their back-extraction from the coating and into
313 the rinsing solution [32]. In view of this, extraction results pertaining to the three rinsing times
314 tested for each rinsing solution were compared in terms of analyte loss, with results shown in
315 Figure 2. As part of the optimization of rinsing time for each solution, SPME coatings and GC
316 injection port glass liner inserts were also inspected in terms of cleanliness, either visually or by
317 microscope, after every 9 extractions and injections. Accumulation of matrix components onto
318 the coating surface could be clearly observed in microscope photos of fibers that were rinsed
319 with solutions containing water; in this regard, the cleanliness of the fiber coatings was observed
320 to be positively correlated with the amount of acetone added to the solution, with higher
321 percentages of acetone yielding cleaner fibers (Supporting Information Figure S5).

322 In summary, a mixture of acetone-water (2:8, v/v) for the pre-desorption rinsing step and
323 25 s as rinsing time were chosen as optimal parameters to minimize the deposition of matrix
324 residues on the coating, while also enabling suitable extraction efficiencies for the studied
325 analytes.

326 3.3 Optimization of SPME parameters

327 The Plackett-Burman (PBD) experimental design is generally employed in method
328 development to identify the most important factors affecting a given process without
329 consideration given to the interaction effects between and among the evaluated factors. As such,
330 PBD designs are often used as a screening approach in cases where the analysis of a given matrix
331 may involve a high number of factors. As part of method development, once significant factors
332 are identified via PBD, a response surface methodology should be subsequently employed in
333 order to fully optimize the process [33].

334 Results were evaluated by taking into account the extracted mass of each analyte under
335 study. Due to the substantial chemical diversity of the targeted analytes, Pareto charts obtained
336 from the design were evaluated for each chemical class (pesticides, PAHs and PCBs), while
337 analyte response was divided within each class according to compound hydrophobicity ($\text{LogP} <$
338 4 , $4 < \text{logP} < 5$, $\text{logP} > 5$). An examination of the obtained Pareto charts, which can be found
339 under Supporting Information Figures S6-S8, demonstrated that extraction time and stirring rate
340 were positive significant factors for all classes and subgroups of analytes considered. In light of
341 these results, the stirring rate was set at the maximum tested value, 600 rpm (chosen to enable
342 fast agitation and preserve SPME coatings from mechanical damage), with further investigations
343 of the entire extraction time profile for each analyte carried out under this optimized condition
344 (Section 3.4). While incubation time, namely the period of time that samples spend in the
345 heater/agitator prior to extraction, is generally a more important factor to consider for headspace
346 SPME applications — as it is needed to establish equilibrium between the sample and its
347 headspace — in DI-SPME, the incubation period can be employed to control the temperature of
348 samples prior to extraction. The results obtained from the Pareto charts (Figures S6-S8) revealed
349 that for most analyte groups and classes, incubation time did not significantly affect the
350 extraction performances; as for analytes for which incubation significantly affected extraction,
351 the highest responses were obtained at short incubation periods. As such, incubation time was set

352 at 5 min (the lowest level tested in the PBD) for further experiments. While addition of organic
353 solvent as a matrix modifier can promote the release of analytes originally bound to the sample
354 matrix — and thus not available for extraction via SPME — on the other hand, any added
355 organic solvent can act as a competing extraction phase with the SPME coating, diminishing the
356 extractable amount of certain analytes. As evident in Figure S6, addition of organic solvent did
357 not positively affect the recovery of the least hydrophobic analytes ($\log P < 4$), which are less
358 likely to bind to matrix constituents, and could thus be directly affected by addition of a
359 competing partition phase. Conversely, for compounds with $\log P > 4$, addition of organic solvent
360 was shown to yield a significant positive effect on extracted amounts. This effect can be related
361 to two possible phenomena: the shifting of the binding equilibria established within the matrix
362 toward the free forms of analytes belonging to this class ($\log P > 4$), and the stabilization of these
363 analytes in the dispersive solution, which avoids loss of analytes due to poor solubility in pure
364 aqueous media. Extraction temperature does affect the diffusivity of analytes into the sample
365 media, and may have an effect on the partition coefficient of the analytes into the SPME coating.
366 In analyses of complex matrices, temperature may also play a role in the binding equilibria
367 established with matrix components; thus, an attentive optimization of this parameter is required
368 so as to ensure temperature has a positive effect on extraction. In the current work, temperature
369 was revealed to be positively significant for all classes and subgroups, with the exception of
370 pesticides with $4 < \log P < 5$. As such, optimization of this parameter was further carried out by
371 CCD. Varying the ionic strength of the sample by addition of salts can promote the extraction of
372 certain analytes via the salting-out effect; however, in the presence of binding media, variation of
373 the ionic strength can shift binding equilibria toward the bound form of analytes, reducing
374 recoveries by SPME. Considering that an interaction effect exists between ionic strength
375 adjustments and media temperature, this parameter was further optimized by CCD. Sample pH
376 adjustments play a significant role in SPME analysis, as certain SPME coatings are only capable
377 of extracting molecular species in their neutral form. Moreover, the sorption of pyrene into some
378 dissolved hydrophobic organic matters commonly found in the marine environment, such as
379 humic acid (HA) and fulvic acid (FA), among others, has been previously shown to be strongly
380 pH-dependent. As pH increases, an obvious decreasing trend can be observed for the partition
381 coefficients of pyrene binding to HA and FA [34]. An examination of the Pareto Charts (Figures
382 S6-S8) revealed that pH played a significant role in the recovery of different chemical classes,

383 yielding both a positive and negative significant effect; as such, this parameter was also further
384 optimized via CCD.

385 Following the successful identification of parameters significantly influencing targeted
386 analyte response, a multivariate optimization of these variables was carried out with aims of
387 selecting parameters capable of yielding maximum signal response.

388 Response surface methodology (RSM) has been widely employed in the optimization of
389 analytical chemistry processes [35-38]. Its widespread application in analytical chemistry lies in
390 the ability of RSM to allow for optimization of various parameters via few experiments, as well
391 as in its capability of not only providing information regarding the individual influences of
392 significant factors, but information pertaining to the interactions occurring among these
393 parameters as well. In addition, a suitable prediction mathematic model can be applied to
394 determine the response inside the range studied for each factor, and it is worth highlighting that
395 this can be achieved by only using experimental design approaches [37, 39].

396 For this purpose, a Central Composite Design (CCD) was employed for optimization of
397 extraction temperature ($^{\circ}\text{C}$), acetone addition (% v/v), pH, and salt addition (% of NaCl). All
398 other parameters were kept constant, as follows: stirring rate set at 600 rpm; pre-incubation time
399 of 5 min; extraction time set at 45 min.

400 The 41 contaminants evaluated were distributed in classes of hydrophilic and lipophilic
401 compounds due to their diverse affinities for the SPME coating, as already described in previous
402 work [40]. However, in contrast to the abovementioned work [40], the currently presented work
403 included an evaluation of the response of each compound, as opposed to an evaluation of the
404 sum of signals pertaining to the targeted analytes. When only the sums of analyte signals are
405 considered, individual information regarding each compound can be missed, especially in cases
406 where there is high intensity variability among the targeted analytes. As an example, an increase
407 in the total response (sum) does not always correspond to an increased response for a given
408 analyte, as variations in independent variables (factors) can significantly enhance responses
409 analytes while negatively affecting the responses of others. Moreover, the effect of a given
410 independent variable on the response of a given analyte is strictly related to the chemical
411 properties of said analyte. Thus, in cases where many compounds are being studied, dividing
412 them into groups based on their chemical properties may constitute a feasible firsthand approach

413 to analysis. However, when grouping compounds in such a manner, one should not interpret the
414 sum of their response as a single response corresponding to the whole group. When such an
415 approach is carried out, individual information regarding each compound will likely be missed,
416 enforcing the necessity of individually evaluating compounds, even if they are firstly divided
417 into groups for convenience of analysis.

418 In view of the above, as a firsthand approach to an evaluation of the influences of
419 individual factors on analyte response, the 41 contaminants under study were separated into three
420 groups based on their Log P: highly lipophilic ($\text{Log P} \geq 5.6$), lipophilic ($3.46 \leq \text{Log P} < 5.6$), and
421 hydrophilic compounds ($\text{Log P} < 3.46$). Log P ranges were selected based on the similarity of
422 significant factors among compounds ($p < 0.05$); in other words, categorization of compounds
423 into groups was based on the similarity of their behavior in relation to the evaluated factors. A
424 detailed discussion regarding the effect of the individual variables for each group of analytes will
425 be carried out next.

426 Using the Derringer & Suich's desirability function approach, which can maximize the
427 overall desirability (multiple response) based on controllable factors, optimized conditions for
428 each specific group of analytes [41, 42] based on their Log P were attained, as well as a suitable
429 compromise of all conditions for simultaneous analysis of all targeted analytes. Seeing as most
430 targeted analytes under study are characterized by a lipophilic nature, the conditions optimized
431 for simultaneous analysis of all compounds mainly favored an enhancement of response for
432 lipophilic compounds. As overall desirability is obtained by combining individual desirabilities
433 via their geometric mean, general method response decreases significantly for hydrophilic
434 analytes for which best conditions differ from the desired conditions for analysis of lipophilic
435 compounds (which represent the majority of the targeted analytes) [37, 41, 42]. To solve this
436 issue, the final conditions for analysis of all targeted analytes were selected by slightly displacing
437 the values of the independent variables to also favor hydrophilic compounds.

438 Experimental values attained using the selected conditions were then compared to values
439 obtained through a mathematical model of predicted values. The relative standard deviation
440 (RSD) obtained for all compounds presented less than 5% variation, indicating that the equation
441 was well adjusted. The determination coefficient (R^2) ranged from 0.668 to 0.925, and the lack-

442 of-fit test yielded non-significant results ($p > 0.05$), confirming a good fit for all compounds [37,
443 41, 42].

444 In sum, optimal conditions were obtained for the simultaneous analysis of all targeted
445 compounds, as well as for each of the three groups described above. The development of
446 different optimization processes, including a process for the simultaneous analysis of all studied
447 compounds as well as optimizations targeted at specific groups, can be very useful in a variety of
448 applications. As the analyst can easily select conditions that lead to optimal method performance
449 for a specific group of contaminants of interest, or select conditions that allow for the
450 simultaneous analysis of different classes of pollutants characterized by a wide range of
451 physicochemical properties. Thus, the currently presented methods can be easily tailored to
452 various analytical goals.

453 Optimum conditions for analysis of highly lipophilic compounds were determined as 80 °C
454 extraction temperature, 40 % organic solvent, 5 % salt content, and pH 10 (Figure S9).
455 Conditions for analysis of medium lipophilicity compounds included 30 °C extraction
456 temperature, 20 % organic solvent, 0 % salt content, and pH 4 (Figure S10). For hydrophilic
457 compounds, optimum conditions were 30 °C extraction temperature, 0 % organic solvent, 20 %
458 salt content, and pH 4 (Figure S11). Lastly, optimized conditions for the simultaneous
459 determination of all targeted analytes were 55 °C extraction temperature, 20% organic solvent,
460 pH 7, and 10 % salt content (Figure S12).

461 This approach provided a powerful analytical tool, as based on the focus of the study,
462 applying optimized conditions for a specific group of analytes can enable the attainment of lower
463 limits of quantification in compliance with MRLs imposed by regulatory agencies. However, it is
464 important to highlight here that the focus of this work centered on the simultaneous evaluation of
465 all studied contaminants in a single analytical run; consequently, only optimized conditions
466 pertaining to the whole group of contaminants were employed for further method validation
467 within the scope of this work.

468 3.4 Evaluation of the extraction time

469 Based on the CCD results, extraction times varying from 5 min to 120 min were studied
470 under the optimized conditions for all analytes (method #1), and for hydrophobic analytes
471 (method#2).

472 The results obtained by method#1 are shown in Figure 3. As can be seen, for most analytes
473 with $\text{LogP} < 4.5$, equilibrium was reached within 30 min, while equilibrium of analytes with
474 $4.5 < \text{LogP} < 5.2$, necessitated an extraction period of 60 min, Lastly, analytes with $\text{LogP} > 5.2$
475 necessitated an equilibration time equal to or longer than 90 min. Thus, an extraction time of 60
476 min was selected as a compromise between method sensitivity and practicality of method
477 throughput.

478 As discussed in section 3.3.2, a higher extraction temperature of 80 °C was deemed as most
479 suitable for most hydrophobic compounds. However, a decrease in the extracted amounts for
480 certain pesticides, such as cerpermethrin and cyfluthrin, was observed for extractions carried out
481 at 80 °C. To investigate this phenomenon, spiked seaweed samples were extracted at three
482 temperatures, 55 °C, 67 °C, and 80 °C, The extracted peaks in the above three conditions were
483 compared with those attained from spiked water. As shown in Figure 4, peak shapes for the two
484 isomers of cerpermethrin and cyfluthrin started to change at 67 °C, with new peaks with different
485 retention times observed at 80 °C. Such a phenomenon can be assumed to occur due to the
486 degradation of these compounds at a high temperature. A similar result was obtained in past
487 research[43], where it was assessed that the hydrolysis of cypermethrin in aqueous solutions was
488 accelerated by high temperatures.

489 Therefore, the extraction time profile for hydrophobic analytes with $\text{LogP} > 5.2$ was set at a
490 lower temperature of 55 °C, while all other parameters obtained from the CCD (pH=10, 40%
491 acetone (v/v)) remained as previously stated. As can be seen from results shown in Figure 5,
492 equilibrium was reached at 60 min for almost all PAHs, pesticides, and some PCBs, such as PCB
493 18, PCB 28, etc., although equilibration for most hydrophobic PCBs could only be reached after
494 90 min.

495

496 3.4 Method validation

497 3.4.1 Selection of internal standard

498 For method validation, quantitation of multi-class analytes was carried out with the use of
499 fortified internal standards (IS) in seaweed samples so as to compensate for matrix effects, drifts
500 in instrumental responses, as well as losses during sample preparation steps. As commonly
501 established, a suitable IS should be characterized by physicochemical properties that are very
502 similar to that of the analyte under study, while also allowing for sufficient separation from said
503 analyte via chromatography. In SPME, a suitable IS should also be able to mimic the partition of
504 the analyte toward the extraction phase as well as its partition to any other competing phase [26].
505 To date, the most accurate and simplest method for quantification is the use of an isotopically
506 labeled internal standard. However, due to the prohibitive cost of some isotopically labeled
507 analytes, congeners of analytes or compounds meeting the above requirements are often selected
508 as alternative IS.

509 Based on previous reports, (phenoxy-¹³C₆)-cis-permethrin was used as IS for PYR, while
510 (diethyl-D₁₀)-chlorpyrifos was used as IS for the remaining pesticides [44]. Naphthalene-d₈,
511 benzo[a]anthracene-d₁₂, acenaphthene-d₁₀, phenanthrene-d₁₀, chrysene-d₁₂, and benzo[a]pyrene-
512 d₁₂ were used as IS for PAHs [45, 46]. However, for PCBs, due to the existence of chlorine
513 isotopes in PCB compounds, perdeuterated PCBs do not show enough mass shift to overcome
514 the chlorine isotope patterns, while ¹³C labeled PCB congeners are prohibitively expensive [47].
515 Therefore, PCB congeners (isomers), which are not reported as main contaminants in aquatic
516 products and can be fully separated from all other PCB congeners in the GC conditions used for
517 this work, were selected as internal standards for PCBs (e.g PCB 30, PCB 105, and PCB 169).

518 3.4.2 Linearity and Limits of Quantitation

519 Linearity was evaluated by matrix-matched calibration curves, using relative area versus IS
520 area. Preparation of the spiked samples at different calibration levels was performed as reported
521 in section 2.1. Calibration levels were set at 1, 2, 5, 10, 20, 50, 100, 200, 500, 1000 and 2000 ng
522 g⁻¹, while the concentration of the internal standards was 100 ng g⁻¹. Limits of quantification
523 (LOQ) were calculated using the signal-to-noise method. For these calculations, peak-to-peak
524 noise values around each analyte retention time were measured, and concentrations of a given
525 analyte that would yield a signal equal to ten times that of the signal-to-noise ratio (10 S/N) were
526 established as the LOQ value for said analyte. Results obtained for method #1 in DI-SPME mode
527 for all analytes are shown in Table 1.

528 Generally, the coefficient of determination (R^2) of a calibration equation is used to evaluate
529 linearity of calibration curves. However, the intercept term of the calibration equation might be
530 influenced by the baseline of the spectrometer and the nature of the reference sample. As extra
531 terms in an equation will always improve the fit to a straight line, simply determining how well a
532 straight line is fitted to the data does not always provide reliable information regarding the
533 linearity of the calibration curve over the entire calibration range studied. Therefore, in addition
534 to evaluating the coefficient of determination, a lack-of-fit statistical test was also employed in
535 the present work to confirm linearity for all analytes. The overall lack-of-fit of the calibration
536 equation, excluding the intercept term, was then compared with the replicate error (analysis of
537 variance, ANOVA), with effects deemed statistically significant at a 95% confidence level ($p <$
538 0.05). The attained results revealed no significant effects for all analytes, meaning that the
539 intercept term was not important. Thus, R^2 could be used to evaluate linearity without
540 consideration given to other interference factors. As can be seen from Table 1, the method
541 showed good linearity for all analytes in the entire calibration range selected for each analyte,
542 with $R^2 > 0.995$.

543 Excellent LOQs were achieved with the proposed method. For all PCBs, LOQs lower than
544 or equal to 13.3 ng g^{-1} were achieved, while LOQs lower than or equal to 10.0 ng g^{-1} were
545 achieved for all PAHs. LOQs of 20.0 ng g^{-1} or lower were achieved for most pesticides, with the
546 exceptions of LOQs corresponding to more hydrophilic pesticides (such as propoxur and
547 carbaryl), owing to the low affinity of these compounds toward the fiber coating, as well as to
548 their impaired GC responses and of LOQs of some highly hydrophobic pesticides, such as
549 resmethrin, cyfluthrin, cypermethrin, and deltamethrin, among others ($20.0 < \text{LOQs} \leq 33.0 \text{ ng g}^{-1}$).
550 Despite the toxicity of the above contaminants, which may pose a hazard to both human health
551 and the environment at high enough quantities, regulation for these contaminants in edible
552 seaweed is still very limited. While the EU Pesticide Database [48] regulated the maximum
553 residue levels (MRLs) for some pesticides in seaweeds, no clear limit information was found for
554 PCBs and PAHs in seaweed matrix. The attained LOQs of the currently discussed method
555 (method #1) for all pesticides were lower than the MRL set for seaweeds in the EU Pesticide
556 Database, with the exceptions of carbaryl, resmethrin and flucythrinate, for which the LOQ was
557 a bit higher than the MRL (Table 1).

558 The analytes studied in the present work belong to three different classes of compounds
559 encompassing a wide range of polarities, with the majority of studied compounds characterized
560 by hydrophobicity. In order to evaluate the sensitivity of the DI-SPME method for detection of
561 these hydrophobic compounds in seaweeds, as well as provide additional information regarding
562 method selection based on the physiochemical properties of compounds of interest, linearity and
563 LOQ were also evaluated for the optimized DI-SPME conditions (method #2) targeted at the
564 analysis of hydrophobic compounds ($\text{Log } P > 5.2$). Results shown in Table 2. Excellent linearities
565 for all hydrophobic analytes were achieved in their own linear range. Furthermore, LOQs for all
566 pesticides obtained in this optimized condition were much lower than those attained via method #1
567 ($\text{LOQs} \leq 13.3 \text{ ng g}^{-1}$), satisfying the LOQ requirements set by EU regulation [48].

568 Since MRLs for PCBs and PAHs in seaweed have yet to be established by regulatory
569 agencies, the LOQs achieved in the proposed work were compared with recent publications
570 reported for GC-based residue analyses in seaweeds. To the best of our knowledge, no reports
571 on the simultaneous detection of all PCBs and PAHs studied in the current work have been
572 published to date; thus, different papers, focusing on either PCBs or PAHs, were used for
573 comparison [49, 50] (Table 3). As can be clearly surmised by comparing results in Table 3, the
574 majority of LOQs for PCBs and PAHs achievable via either one of the two optimized DI-SPME
575 conditions were similar or lower than those previously reported. Although LOQs for some PAHs,
576 such as naphthalene and acenaphthylene, were slightly higher than previously reported LOQs, the
577 attained values are nonetheless still satisfactory, particularly in view of the wide spectrum
578 analytical capabilities of the method herein discussed.

579 3.4.3 Accuracy and precision

580 The spiking standard mixtures, as well as the spiked seaweed samples used in during steps
581 were prepared according to the procedure described in section 2.3. Precision was studied by
582 performing repeatability (intra-day precision) and reproducibility (inter-day precision) studies.
583 Repeatability was determined via analysis of seaweed samples spiked at four concentrations: 15,
584 50, 100, and 500 ng g^{-1} . Data from five analyses for each concentration level performed in the
585 same day were used for calculations ($n=5$), with the data expressed as relative standard
586 deviations (RSD %). For reproducibility measurements, all seaweed samples were spiked at the
587 same concentration levels as abovementioned and submitted to analysis. Data from three
588 analyses for each concentration level performed in three nonconsecutive days were calculated,

589 and the reproducibility was expressed as RSD %. As presented in Table 4, good results were
590 obtained for analytes studied in this work, with attained RSDs for repeatability and
591 reproducibility lower than 22.3% and 25.5%, respectively.

592 To evaluate the accuracy of present method, the mean relative recovery of the analyte was
593 assessed by fortifying blank seaweed samples at the four concentration levels above mentioned,
594 considering both inter- and intra-day measurements. The spiked samples were quantified using
595 the matrix matched calibration curves. For most analytes, accuracy ranged from 60 to 125%
596 (Table 4).

597 Since the present work had as central focus the simultaneous analysis of multiresidues
598 characterized by a wide range of polarities, precision and accuracy for DI-SPME method #2,
599 which was developed to specifically target hydrophobic analytes, were not investigated in this
600 work.

601 **4 Analysis of real samples**

602 Five different commercially available edible seaweed sample types, including natural dry
603 nori and wakame, as well as different flavored seaweed snacks, were bought from a local
604 supermarket in Waterloo, ON, Canada. The validated DI-SPME-GC-MS (method #1) was used
605 for analysis of the above real samples. The attained results are shown in Table 5. Analysis
606 showed that concentrations of the three classes of residues were below the LOQs in four samples.
607 However, one pesticide (tetramethrin, 8.3 ng g⁻¹), one PCB (PCB 18, 16.0 ng g⁻¹), and two PAHs
608 (phenanthrene, 15.5 ng g⁻¹ and fluoranthene, 5.2 ng g⁻¹) were detected in a dry Wakame sample.
609 As a matter of concern, it should be noted that the above detected compounds, which are widely
610 employed in household or industrial applications, are well-known to have toxic effects on both
611 humans and the environment; as such, their presence in edible foodstuffs should be given careful
612 attention.

613 **5 Conclusion**

614 For the first time, a matrix-compatible PDMS/DVB/PDMS coating was applied to DI-
615 SPME of multiclass residue analysis in dry seaweeds, enabling the simultaneous quantitation of
616 41 analytes belonging to three different chemical classes. The validated method yielded good
617 accuracy, precision, and sensitivity. In view of the satisfactory performance of the method, as

618 well as its green and automated nature, the proposed method can be considered as appropriate for
619 the detection of pesticides, PCBs, and PAHs in seaweeds. Furthermore, the method was
620 successfully applied to the determination of multiresidues in commercial dry seaweeds.

621 Although the DI-SPME method developed for wide spectrum coverage of analytes
622 (method#1) failed to yield a satisfactory enough performance in the detection of some highly
623 hydrophobic pesticides (e.g., cyfluthrin, cypermethrin, etc.), better results were achieved via the
624 optimized condition focused on hydrophobic analytes with $\text{LogP} > 5.2$. Therefore, using this work
625 as reference, analysts can select the appropriate DI-SPME conditions for a given application
626 based on the physiochemical characteristics of the compounds of interest, as well as the
627 regulated requirements of detection of said analyte(s). A limitation of the currently presented
628 method pertains to the relatively poor LOQs obtained for hydrophilic pesticides (e.g., carbaryl
629 and propoxur). In this regard, further investigations will be carried out in the future, particularly
630 in view of the development of alternative coating chemistries with enhanced affinity toward
631 polar analytes.

632 The currently presented method overcomes most of the common challenges associated with
633 dry sample analysis. Compared with previous reports, which have mainly employed liquid-liquid
634 extraction, the proposed SPME method integrates sampling, extraction, concentration, and
635 sample introduction into a single, low-solvent consuming and automatable step, presenting a
636 much simpler and greener approach to analysis. Moreover, by using the matrix-compatible
637 PDMS/DVB/PDMS coating and thoroughly optimizing the DI-SPME conditions, higher
638 sensitivity and better representativeness of analytes were achieved, affording a especially
639 suitable method for the analysis of hydrophobic compounds in dry seaweed matrix. The current
640 work represents a first report of a DI-SPME method utilizing matrix-compatible fibers for
641 simultaneous multiclass and multiresidue analysis of seaweeds.

642

643 **Acknowledgements**

644 This work was supported by the Natural Sciences and Engineering Research Council of
645 Canada. L.Z. thanks the Chinese Scholarship Council for her scholarship. V.A.J. thanks FAPESP,
646 process 2016/16180-6 for his scholarship. The authors would also like to express their gratitude

647 to Dominika Sylwia Gruszecka, Mohammad Maududul Huq, and Prof. Zengyuan Niu for their
648 kind assistance.

649

650 **References**

651 [1] D.I. Sánchez-Machado, J. López-Cervantes, J. López-Hernández, P. Paseiro-Losada, Fatty
652 acids, total lipid, protein and ash contents of processed edible seaweeds, *Food Chem.* 85 (2004)
653 439-444.

654 [2] M.H. Norziah, C.Y. Ching, Nutritional composition of edible seaweed *Gracilaria changgi*,
655 *Food Chem.* 68 (2000) 69-76.

656 [3] P. Rupérez, Mineral content of edible marine seaweeds, *Food Chemistry*, 79 (2002) 23-26.

657 [4] P. MacArtain, C.I. Gill, M. Brooks, R. Campbell, I.R. Rowland, Nutritional value of edible
658 seaweeds, *Nutr. Rev.* 65 (2007) 535-543.

659 [5] D. Garcia-Rodriguez, R. Cela-Torrijos, R. Lorenzo-Ferreira, A. Carro-Diaz, Analysis of
660 pesticide residues in seaweeds using matrix solid-phase dispersion and gas chromatography–
661 mass spectrometry detection, *Food Chem.* 135 (2012) 259-267.

662 [6] A. Ishizaki, K. Sito, H. Kataoka, Analysis of contaminant polycyclic aromatic hydrocarbons
663 in tea products and crude drugs, *Anal. Method* 3 (2011) 299-305.

664 [7] F. Kanzari, A.D. Syakti, L. Asia, L. Malleret, A. Piram, G. Mille, P. Doumenq, Distributions
665 and sources of persistent organic pollutants (aliphatic hydrocarbons, PAHs, PCBs and pesticides)
666 in surface sediments of an industrialized urban river (Huveaune), France, *Sci. Total Environ.*
667 478 (2014) 141-151.

668 [8] I.C.T. Nisbet, P.K. LaGoy, Toxic equivalency factors (TEFs) for polycyclic aromatic
669 hydrocarbons (PAHs), *Regul. Environ. Toxicol. Pharmacol.* 16 (1992) 290-300.

670 [9] A. Zohair, A.-B. Salim, A.A. Soyibo, A.J. Beck, Residues of polycyclic aromatic
671 hydrocarbons (PAHs), polychlorinated biphenyls (PCBs) and organochlorine pesticides in
672 organically-farmed vegetables, *Chemosphere* 63 (2006) 541-553.

673 [10] U.S. Environmental Protection Agency, [http://www.epa.gov/ttnamti1/files/ambient/](http://www.epa.gov/ttnamti1/files/ambient/airtox/tocomp99.pdf)
674 [airtox/tocomp99.pdf](http://www.epa.gov/ttnamti1/files/ambient/airtox/tocomp99.pdf) (Accessed 21/12/2013).

- 675 [11] H.C. Menezes, B.P. Paulo, M.J.N. Paiva, S.M.R. de Barcelos, D.F.D. Macedo, Z.L. Cardeal,
676 Determination of polycyclic aromatic hydrocarbons in artisanal cachaça by DI-CF-SPME-
677 GC/MS, *Microchem. J.* 118 (2015) 272-277.
- 678 [12] I. Haddaoui, O. Mahjoub, B. Mahjoub, A. Boujelben, G. Di Bella, Occurrence and
679 distribution of PAHs, PCBs, and chlorinated pesticides in Tunisian soil irrigated with treated
680 wastewater, *Chemosphere* 146 (2016) 195-205.
- 681 [13] G. Ross, The public health implications of polychlorinated biphenyls (PCBs) in the
682 environment, *Ecotoxicol. Environ. Saf.* 59 (2004) 275-291.
- 683 [14] I. Denholm, G.J. Devine, T.E. Horsberg, S. Sevatdal, A. Fallang, D.V. Nolan, R. Powell,
684 Analysis and management of resistance to chemotherapeutants in salmon lice, *Lepeophtheirus*
685 *salmonis* (Copepoda: Caligidae), *Pest Manage. Sci.* 58 (2002) 528-536.
- 686 [15] R. Carafa, J. Wollgast, E. Canuti, J. Ligthart, S. Dueri, G. Hanke, S. Eisenreich, P. Viaroli, J.
687 Zaldívar, Seasonal variations of selected herbicides and related metabolites in water, sediment,
688 seaweed and clams in the Sacca di Goro coastal lagoon (Northern Adriatic), *Chemosphere* 69
689 (2007) 1625-1637.
- 690 [16] M. Bjørling-Poulsen, H.R. Andersen, P. Grandjean, Potential developmental neurotoxicity
691 of pesticides used in Europe, *Environ. Health* 7 (2008) 50.
- 692 [17] M.P. Crespo, M.L. Yusty, Comparison of supercritical fluid extraction and Soxhlet
693 extraction for the determination of PCBs in seaweed samples, *Chemosphere* 59 (2005) 1407-
694 1413.
- 695 [18] Regulation (EC) No. 396/2005 of the European Parliament and of the Council on maximum
696 residue levels of pesticides in or on food and feed of plant and animal origin and amending
697 Council Directive 91/414/EEC. European Union. (2005)
698 [http://ec.europa.eu/food/plant/pesticides/eu-pesticides-](http://ec.europa.eu/food/plant/pesticides/eu-pesticides-database/public/?event=homepage&language=EN)
699 [database/public/?event=homepage&language=EN](http://ec.europa.eu/food/plant/pesticides/eu-pesticides-database/public/?event=homepage&language=EN)
- 700 [19] M.O. Punin Crespo, M.A. Lage Yusty, Comparison of supercritical fluid extraction and
701 Soxhlet extraction for the determination of aliphatic hydrocarbons in seaweed samples,
702 *Ecotoxicol. Environ. Saf.* 64 (2006) 400-405.
- 703 [20] D. García-Rodríguez, A.M. Carro-Díaz, R.A. Lorenzo-Ferreira, R. Cela-Torrijos,
704 Determination of pesticides in seaweeds by pressurized liquid extraction and programmed

- 705 temperature vaporization-based large volume injection-gas chromatography-tandem mass
706 spectrometry, *J. Chromatogr. A* 1217 (2010) 2940-2949.
- 707 [21] H.M. El, G. Culioli, A. Ortalomagne, L. Piovetti, S.E. Chitour, Isolation of the volatile
708 compounds from the brown alga dictyopteris membranacea by focused microwave-assisted
709 hydrodistillation, *J. Essent. Oil Res.* 14 (2002) 422-424.
- 710 [22] G. Purcaro, P. Morrison, S. Moret, L.S. Conte, P.J. Marriott, Determination of polycyclic
711 aromatic hydrocarbons in vegetable oils using solid-phase microextraction-comprehensive two-
712 dimensional gas chromatography coupled with time-of-flight mass spectrometry, *J. Chromatogr.*
713 *A* 1161 (2007) 284-291.
- 714 [23] A. Beyer, M. Biziuk, Applications of sample preparation techniques in the analysis of
715 pesticides and PCBs in food, *Food Chem.* 108 (2008) 669-680.
- 716 [24] É.A. Souza Silva, J. Pawliszyn, Optimization of Fiber Coating Structure Enables Direct
717 Immersion Solid Phase Microextraction and High-Throughput Determination of Complex
718 Samples, *Anal. Chem.* 84 (2012) 6933-6938.
- 719 [25] É.A.S. Silva, V. Lopez-Avila, J. Pawliszyn, Fast and robust direct immersion solid phase
720 microextraction coupled with gas chromatography-time-of-flight mass spectrometry method
721 employing a matrix compatible fiber for determination of triazole fungicides in fruits, *Journal of*
722 *Chromatography A*, 1313 (2013) 139-146.
- 723 [26] É.A. Souza-Silva, J. Pawliszyn, Direct Immersion Solid-Phase Microextraction with Matrix-
724 Compatible Fiber Coating for Multiresidue Pesticide Analysis of Grapes by Gas
725 Chromatography-Time-of-Flight Mass Spectrometry (DI-SPME-GC-ToFMS), *Journal of*
726 *Agricultural and Food Chemistry*, 63 (2015) 4464-4477.
- 727 [27] G.S. De, E. Gionfriddo, J. Pawliszyn, A new and efficient Solid Phase Microextraction
728 approach for analysis of high fat content food samples using a matrix-compatible coating,
729 *Talanta*, 167 (2017) 754.
- 730 [28] A. Naccarato, J. Pawliszyn, Matrix compatible solid phase microextraction coating, a
731 greener approach to sample preparation in vegetable matrices, *Food Chemistry*, 206 (2016) 67-
732 73.
- 733 [29] M.D. Burford, S.B. Hawthorne, D.J. Miller, Extraction rates of spiked versus native PAHs
734 from heterogeneous environmental samples using supercritical fluid extraction and sonication in
735 methylene chloride, *Anal. Chem.* 65 (1993) 1497-1505.

- 736 [30] S. Aerts, Use of inhibitors to prevent bacterial artefacts in experiments. External report of
737 the belgian nuclear research centre, (2008).
- 738 [31] H.C. Lichstein, M.H. Soule, Studies of the Effect of Sodium Azide on Microbic Growth and
739 Respiration: I. The Action of Sodium Azide on Microbic Growth, *J. Bacteriol.* 47 (1944) 221.
- 740 [32] L. Kudlejova, S. Risticevic, D. Vuckovic, 7-Solid-Phase Microextraction Method
741 Development, *Handbook of Solid Phase Microextraction*, (2012) 201-249.
- 742 [33] Analytical Methods Committee, AMCTB No 55 Experimental design and optimisation (4):
743 Plackett-Burman designs, *Anal. Method* 5 (2013) 1901-1903.
- 744 [34] Yingchen, Liying, Wang, Effect of pH on binding of pyrene to hydrophobic fractions of
745 dissolved organic matter (DOM) isolated from lake water, *Acta Geochim.* 35 (2016) 1-6.
- 746 [35] M.A. Bezerra, R.E. Santelli, E.P. Oliveira, L.S. Villar, L.A. Escaleira, Response surface
747 methodology (RSM) as a tool for optimization in analytical chemistry, *Talanta* 76 (2008) 965-
748 977.
- 749 [36] L. Vera Candioti, M.M. De Zan, M.S. Cámara, H.C. Goicoechea, Experimental design and
750 multiple response optimization. Using the desirability function in analytical methods
751 development, *Talanta* 124 (2014) 123-138.
- 752 [37] M. Otto, *Chemometrics: statistics and computer application in analytical chemistry*, third ed.,
753 Weinheim, Germany, 2016.
- 754 [38] N. Kumar, A. Bansal, G.S. Sarma, R.K. Rawal, Chemometrics tools used in analytical
755 chemistry: An overview, *Talanta* 123 (2014) 186-199.
- 756 [39] M.P. Callao, Multivariate experimental design in environmental analysis, *Trac-Trend. Anal.*
757 *Chem.* 62 (2014) 86-92.
- 758 [40] F. Mousavi, E. Gionfriddo, E. Carasek, E.A. Souza-Silva, J. Pawliszyn, Coupling solid
759 phase microextraction to complementary separation platforms for metabotyping of *E. coli*
760 metabolome in response to natural antibacterial agents, *Metabolomics*, 12 (2016) 169.
- 761 [41] P.L. Goethals, B.R. Cho, Extending the desirability function to account for variability
762 measures in univariate and multivariate response experiments, *Compt. Ind. Eng.* 62 (2012) 457-
763 468.
- 764 [42] N.R. Costa, J. Lourenço, Z.L. Pereira, Desirability function approach: A review and
765 performance evaluation in adverse conditions, *Chemom. Intell. Lab. Syst.* 107 (2011) 234-244.

- 766 [43] H.M. Lin, J.A. Gerrard, I.C. Shaw, Stability of the insecticide cypermethrin during tomato
767 processing and implications for endocrine activity, *Food. Addit. Contam.* 22 (2005) 15-22.
- 768 [44] D. García-Rodríguez, A.M. Carro, R. Cela, R.A. Lorenzo, Microwave-assisted extraction
769 and large-volume injection gas chromatography tandem mass spectrometry determination of
770 multiresidue pesticides in edible seaweed, *Anal. Bioanal. Chem.* 398 (2010) 1005-1016.
- 771 [45] C.D. Dong, C.F. Chen, C.W. Chen, Determination of Polycyclic Aromatic Hydrocarbons in
772 Industrial Harbor Sediments by GC-MS, *Int. J. Environ Environ. Res. Public Health* 9 (2012)
773 2175.
- 774 [46] X. Wang, Y. Wang, Y. Qin, L. Ding, Y. Chen, F. Xie, Sensitive and selective determination
775 of polycyclic aromatic hydrocarbons in mainstream cigarette smoke using a graphene-coated
776 solid-phase microextraction fiber prior to GC/MS, *Talanta* 140 (2015) 102-108.
- 777 [47] S.B. Hawthorne, C.B. Grabanski, D.J. Miller, Solid-phase-microextraction measurement of
778 62 polychlorinated biphenyl congeners in milliliter sediment pore water samples and
779 determination of K(DOC) values, *Anal. Chem.* 81 (2009) 6936.
- 780 [48] EU Pesticides Database, [http://ec.europa.eu/food/plant/pesticides/eu-pesticides-](http://ec.europa.eu/food/plant/pesticides/eu-pesticides-database/public/?event=homepage&language=EN)
781 [database/public/?event=homepage&language=EN](http://ec.europa.eu/food/plant/pesticides/eu-pesticides-database/public/?event=homepage&language=EN).
- 782 [49] M.O. Punín Crespo, M.A. Lage Yusty, Comparison of supercritical fluid extraction and
783 Soxhlet extraction for the determination of PCBs in seaweed samples, *Chemosphere* 59 (2005)
784 1407-1413.
- 785 [50] C. Sánchez-Brunete, E. Miguel, J.L. Tadeo, Analysis of 27 polycyclic aromatic
786 hydrocarbons by matrix solid-phase dispersion and isotope dilution gas chromatography-mass
787 spectrometry in sewage sludge from the Spanish area of Madrid, *J. Chromatogr. A* 1148 (2007)
788 219-227.

789

790 **Figure Captions**

791

792 Fig.1 Extracted amount of (a) pesticides, (b) PAHs and (c) PCBs from spiked samples,
793 containing 0.02% of NaN₃, held in the autosampler rack at r.t. at different waiting times prior
794 SPME extraction.

795 Fig. 2 Comparison of DI-SPME results for extractions carried out under the optimal rinsing
796 times for each rinsing solution.

797 Fig. 3 Extraction time profiles of a) PAHs, b) PCBs and c) pesticides for DI-SPME method
798 carried out under optimized conditions for simultaneous analysis of all targeted compounds

799 Fig. 4 Chromatographic profiles showing the variations in extraction amounts of cyfluthrin and
800 cypermethrin for extractions carried out at different temperatures

801 Fig. 5 Extraction time profile of a) PAHs, b) PCBs and c) pesticides, obtained under optimized
802 conditions for highly hydrophobic compounds

Table 1. Linearity, R^2 , and LOQs for all targets extracted under optimized DI-SPME conditions for simultaneous analysis of all analytes under study

Compound	Linear range/ng g ⁻¹	R^2	LOQ/ ng g ⁻¹	MRL ^a / ng g ⁻¹
2-phenylphenol	20-2000	0.997	16.7	50
Propoxur	50-2000	0.994	26.2	
Chlorpyrifos-methyl	1-2000	0.996	1.0	
Carbaryl	20-2000	0.995	29.2	10
Chlorpyrifos-ethyl	5-2000	0.995	5.0	
Piperonyl butoxide	2-2000	0.998	1.4	
Resmethrin	50-2000	0.997	25.4	10*
Tetramethrin	10-2000	0.995	6.2	
Lamda-cyhalothrin	20-2000	0.994	13.3	20*
Permethrin	10-2000	1.000	8.5	50*
Cyfluthrin	50-2000	0.993	30.0	20*
Cypermethrin	50-2000	0.995	30.0	50*
Flucythrinate	20-2000	0.994	20.0	10*
Fenvalerate	20-2000	0.998	13.4	20*
Deltamethrin	50-2000	0.993	33.0	50 ^W
PCB 18	10-2000	0.997	10.0	
PCB 28	5-2000	0.999	5.0	
PCB 52	5-2000	0.999	4.0	
PCB 44	2-2000	0.999	1.7	
PCB 101	5-2000	0.999	5.0	
PCB 149	5-2000	0.993	5.0	
PCB 118	5-2000	0.999	2.5	
PCB 153	10-2000	0.995	7.8	
PCB 138	5-2000	0.995	5.0	
PCB 180	10-2000	0.998	6.0	
PCB 170	10-2000	0.998	6.0	

Table 1 (Continued)

Compound	Linear range/ng g ⁻¹	R ²	LOQ/ ng g ⁻¹	MRL ^a / ng g ⁻¹
Naphthalene	10-2000	0.999	10.0	
Acenaphthylene	10-2000	0.999	7.8	
Acenaphthene	20-2000	1.000	13.3	
Fluorene	10-2000	1.000	10.0	
Phenanthrene	5-2000	0.998	3.4	
Anthracene	5-1000	0.999	2.6	
Fluoranthene	2-2000	1.000	2.0	
Pyrene	5-2000	0.999	2.2	
Benzo(a)anthracene	2-2000	1.000	1.8	
Chrysene	5-2000	1.000	3.3	
Benzo(b)fluoranthene	1-2000	1.000	1.0	
Benzo(k)fluoranthene	1-2000	1.000	1.0	
Benzo(a)pyrene	1-2000	1.000	1.0	
Indeno(1,2,3-cd)pyrene	1-2000	0.999	1.0	
Dibenz(ah)anthrene	1-2000	0.999	1.0	
Benzo(ghi)perylene	1-2000	0.997	1.0	

Note: “*”- sum of all isomers; “ψ”- sum of cis-isomers

“a”- EU Pesticide Database. <http://ec.europa.eu/food/plant/pesticides/eu-pesticides-database/public/?event=pesticide.residue.selection&language=EN>

Table 2. Linearity, R^2 , and LOQs for hydrophobic compounds with $\log P > 5.2$

Compound	Linear range/ng g ⁻¹	R^2	LOQ/ ng g ⁻¹
Benzo(a)anthracene	1-2000	0.999	0.7
Chrysene	1-2000	0.999	1.0
Benzo(b)fluoranthene	1-2000	0.999	0.4
Benzo(k)fluoranthene	1-2000	0.998	0.2
Benzo(a)pyrene	1-2000	0.999	0.6
Indeno(1,2,3-cd)pyrene	1-2000	0.999	0.7
Dibenz(ah)anthrene	1-2000	0.995	0.5
Benzo(ghi)perylene	1-2000	0.999	0.6
PCB 18	1-2000	0.999	0.4
PCB 28	2-2000	1.000	1.6
PCB 52	1-2000	1.000	0.8
PCB 44	1-2000	1.000	1.0
PCB 101	2-2000	1.000	1.5
PCB 149	1-2000	0.999	0.6
PCB 118	1-2000	1.000	0.8
PCB 153	1-2000	1.000	0.9
PCB 138	1-2000	0.999	0.8
PCB 180	1-2000	0.999	1.0
PCB 170	1-2000	0.999	0.8
Resmethrin	5-2000	0.998	4.0
Lamda-cyhalothrin	10-2000	0.998	6.0
Permethrin	5-2000	0.999	4.6
Cyfluthrin	20-2000	0.997	19.2
Cypermethrin	20-2000	0.998	13.3
Flucythrinate	10-2000	0.999	7.8
Fenvalerate	5-2000	0.999	4.0
Deltamethrin	10-2000	0.998	5.4

Table 3. Comparison of LOQs obtained in present work versus previously reported LOQs for PAHs and PCBs

Compound	LOQ/ ng g ⁻¹			Compound	LOQ/ ng g ⁻¹		
	Present work (a)	Present work (b)	Paper [37]		Present work (a)	Present work (b)	Paper [36]
Naphthalene	10.0		0.6	PCB 18	10.0	1.4	
Aceaphthylene	7.8		0.1	PCB 28	5.0	1.6	8
Acenaphthene	13.3		0.5	PCB 52	4.0	0.8	6.3
Fluorene	10.0		0.2	PCB 44	1.7	1.0	
Phenanthrene	3.4		0.4	PCB 101	5.4	1.5	5.7
Anthracene	2.6		0.5	PCB 149	5.0	0.6	
Fluoranthene	2.0		0.4	PCB 118	2.5	0.8	0.62
Pyrene	2.2		0.6	PCB 153	7.8	0.9	10
Benzo (a) anthracene	1.8	0.7	0.9	PCB 138	5.0	0.8	
Chrysene	3.3	1.0	0.7	PCB 180	6.0	1.0	6.9
Benzo (b) fluoranthene	1.0	0.4	1.0	PCB 170	6.0	0.8	
Benzo (k) fluoranthene	1.0	0.2	0.5				
Benzo (a) pyrene	1.0	0.6	0.8				
Indeno (1,2,3-cd)pyrene	1.0	0.7	0.2				
Dibenz (ah) anthracene	1.0	0.5	0.8				
Benzo (ghi) perylene	1.0	0.6	0.7				

Note: "a" means optimized DI-SPME conditions for simultaneous extraction of all targeted analytes;

"b" means optimized DI-SPME conditions for hydrophobic analytes with logP>5.

Table 4. Precision and accuracy of the proposed method

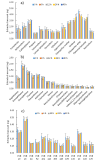
Compound	Intra-day accuracy (%)				Intra-day precision (RSD %)				Inter-day accuracy (%)				Inter-day precision (RSD %)			
	15 ng g ⁻¹	50 ng g ⁻¹	100 ng g ⁻¹	500 ng g ⁻¹	15 ng g ⁻¹	50 ng g ⁻¹	100 ng g ⁻¹	500 ng g ⁻¹	15 ng g ⁻¹	50 ng g ⁻¹	100 ng g ⁻¹	500 ng g ⁻¹	15 ng g ⁻¹	50 ng g ⁻¹	100 ng g ⁻¹	500 ng g ⁻¹
2-phenylphenol	/	113.7	105.5	96.4	/	5.8	7.2	13.5	/	113.5	101.4	88.9	/	8.8	14.4	2.2
Propoxur	/	44.8	77.2	102.4	/	17.0	3.7	2.7	/	52.9	92.5	122.7	/	14.1	1.8	3.3
Chlorpyrifos-methyl	63.3	119.8	87.2	95.6	22.3	12.0	7.1	7.2	63.7	92.9	79.4	128.0	20.2	19.5	16.4	7.4
Carbaryl	/	107.9	113.7	93.7	/	13.5	8.6	6.9	/	96.7	96.5	96.4	/	13.2	16.4	10.9
Chlorpyrifos-ethyl	105.0	143.3	75.2	95.6	2.7	20.8	6.7	7.2	137.9	95.9	100.0	95.6	21.7	17.0	8.9	6.4
Piperonyl butoxide	117.5	53.4	95.0	109.1	20.0	14.5	1.0	7.0	140.8	76.2	86.5	97.8	16.7	21.7	18.2	5.6
Resmethrin	/	97.3	98.7	93.1	/	16.1	6.6	6.9	/	74.8	102.9	95.7	/	3.2	1.1	1.7
Tetramethrin	83.2	101.6	109.6	125.5	11.9	8.8	3.7	10.2	91.9	88.1	107.9	99.7	11.9	24.7	4.3	17.0
Lamda-cyhalothrin	107.8	103.1	96.3	103.0	8.6	3.2	4.0	4.7	100.9	106.0	92.6	100.1	12.5	12.5	9.3	2.3
Permethrin	78.0	101.7	101.2	103.1	15.8	4.5	4.6	4.6	79.2	100.9	99.2	99.9	16.9	9.0	6.4	1.2
Cyfluthrin	/	87.9	103.1	113.5	/	10.2	8.5	8.8	/	93.3	101.2	100.0	/	14.1	7.8	5.7
Cypermethrin	/	100.4	110.3	114.2	/	10.8	8.2	11.3	/	110.3	97.0	106.3	/	21.2	18.1	2.1
Flucythrinate	/	106.9	106.9	109.8	/	6.0	6.6	3.7	/	96.1	102.0	99.9	/	15.9	8.9	5.6
Fenvalerate	87.4	109.7	112.6	110.6	16.9	13.9	11.5	3.8	84.6	99.2	100.8	99.9	22.8	12.3	9.5	6.2
Deltamethrin	/	96.5	95.2	112.3	/	14.3	8.0	4.6	/	91.4	84.9	100.8	/	15.2	15.9	5.6
PCB 18	106.0	102.6	98.2	88.1	6.2	4.9	1.0	1.6	99.8	107.1	98.3	100.0	11.6	8.6	3.3	7.7
PCB 28	79.7	99.8	93.6	83.2	14.6	1.8	2.9	3.1	77.5	104.7	93.3	100.2	20.6	14.1	6.2	11.0
PCB 52	75.1	102.4	98.2	93.6	6.7	2.9	1.7	3.3	72.4	105.4	100.2	99.9	7.3	14.4	4.9	5.5
PCB 44	64.2	103.6	100.4	97.4	12.3	2.1	2.1	4.2	65.4	104.1	102.2	99.8	13.4	12.7	4.6	4.3
PCB 101	103.0	99.6	89.2	84.4	7.2	4.7	5.9	5.2	91.2	97.3	88.7	100.7	25.5	7.2	5.4	11.3
PCB 149	71.0	101.0	114.6	106.2	6.1	7.9	4.3	4.5	61.2	97.1	113.4	99.5	20.2	13.7	5.7	5.8
PCB 118	106.8	101.3	90.5	82.5	10.4	0.9	5.6	5.2	96.3	110.9	91.5	100.2	16.1	17.6	8.8	11.9
PCB 153	73.1	104.0	108.9	97.1	8.9	3.5	3.2	2.8	70.5	99.3	108.1	99.7	17.8	12.8	4.9	3.5

Table 4 (Continued)

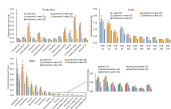
Compound	Intra-day accuracy (%)				Intra-day precision (RSD %)				Inter-day accuracy (%)				Inter-day precision (RSD %)			
	15 ng g ⁻¹	50 ng g ⁻¹	100 ng g ⁻¹	500 ng g ⁻¹	15 ng g ⁻¹	50 ng g ⁻¹	100 ng g ⁻¹	500 ng g ⁻¹	15 ng g ⁻¹	50 ng g ⁻¹	100 ng g ⁻¹	500 ng g ⁻¹	15 ng g ⁻¹	50 ng g ⁻¹	100 ng g ⁻¹	500 ng g ⁻¹
PCB 138	65.2	104.0	110.3	100.4	4.9	5.8	3.2	3.0	61.7	100.0	109.6	99.6	18.7	15.2	4.9	3.1
PCB 180	75.0	98.6	99.3	86.4	11.7	2.1	0.7	2.2	74.0	104.2	99.3	100.0	10.4	20.5	4.7	8.9
PCB 170	87.0	103.8	100.6	90.3	10.7	0.5	0.6	1.9	80.5	106.2	100.6	99.9	21.1	13.4	3.4	6.5
Naphthalene	85.6	103.5	89.8	99.7	21.8	5.3	8.3	10.1	86.1	108.5	88.2	102.6	16.7	9.8	12.8	9.9
Acenaphthylene	110.9	111.4	91.7	101.4	4.3	0.7	0.9	1.1	109.9	116.7	97.7	106.1	5.3	14.0	9.4	5.0
Acenaphthene	87.6	105.6	95.8	100.4	5.6	1.8	1.4	3.9	87.3	101.9	96.2	104.8	18.5	8.0	5.3	6.7
Fluorene	88.9	104.6	97.7	100.0	3.2	4.6	2.2	0.8	89.1	109.3	98.8	102.0	7.6	15.8	4.1	9.2
Phenanthrene	93.4	105.5	97.0	100.9	2.4	3.7	1.1	0.7	94.1	102.9	98.6	106.5	20.5	15.3	1.1	3.5
Anthracene	96.5	102.9	97.9	100.7	5.8	1.4	1.8	0.9	96.7	103.7	100.0	105.4	7.5	13.7	2.3	3.9
Fluoranthene	99.7	109.7	94.0	101.9	2.8	1.1	3.7	3.7	98.9	109.2	96.8	105.9	13.5	18.8	3.4	4.4
Pyrene	94.8	109.3	94.4	101.6	3.4	1.7	4.0	4.0	95.0	110.0	97.1	105.8	6.7	14.6	3.7	5.4
Benzo(a)anthracene	95.9	108.8	94.1	100.3	6.4	2.6	1.2	0.7	96.2	107.6	96.0	103.1	7.1	10.9	3.7	1.6
Chrysene	104.8	110.7	92.7	99.8	2.7	2.4	1.6	1.9	104.8	110.8	95.4	103.3	2.7	12.8	3.5	2.7
Benzo(b)fluoranthene	80.6	114.5	91.4	100.7	4.0	2.4	1.3	1.4	80.6	118.1	94.1	104.2	6.7	18.5	5.5	3.4
Benzo(k)fluoranthene	69.4	109.3	96.1	100.5	6.7	5.9	1.8	0.9	70.1	116.6	98.0	103.2	5.1	17.3	3.6	5.0
Benzo(a)pyrene	79.1	110.6	94.0	100.3	4.4	0.9	1.3	1.0	77.6	116.9	96.4	103.1	12.2	17.6	1.4	1.6
Indeno(1,2,3-cd)pyrene	58.6	113.2	92.9	101.6	14.0	3.0	1.0	3.4	58.1	123.7	96.9	103.8	20.4	20.1	2.8	4.3
Dibenz(ah)anthrene	58.8	110.1	97.2	101.5	14.4	3.4	3.7	2.4	57.9	118.2	100.0	105.0	23.1	20.0	2.9	6.8
Benzo(ghi)perylene	88.0	122.6	84.7	102.5	11.7	1.0	1.2	1.7	86.6	113.7	90.0	105.2	18.4	20.4	10.5	5.9

Table 5. Detection results for commercial edible seaweed samples

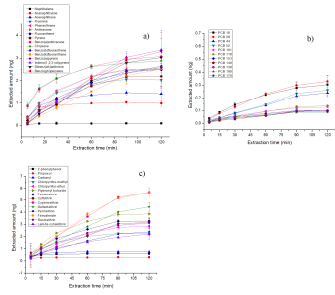
Compound	Detection amount (ng g ⁻¹)				
	Dry Nori-W	Dry Wakame-Guanqun	Dry Wakame-WE1PAC	Seaweed snack-Paido	Seaweed snack-Paido
PCB 18	<LOQ	<LOQ	16.0	<LOQ	<LOQ
PCB 52	n.d	<LOQ	<LOQ	<LOQ	<LOQ
PCB 44	n.d	<LOQ	n.d	n.d	n.d
PCB 149	n.d	<LOQ	n.d	n.d	n.d
Naphthalene	n.d	n.d	n.d	<LOQ	n.d
Acenaphthene	<LOQ	<LOQ	<LOQ	n.d	n.d
Fluorene	n.d	n.d	<LOQ	n.d	n.d
Phenanthrene	n.d	<LOQ	15.5	n.d	n.d
Anthracene	<LOQ	<LOQ	<LOQ	n.d	n.d
Fluoranthene	n.d	n.d	5.2	n.d	n.d
Pyrene	<LOQ	<LOQ	n.d	n.d	n.d
Chrysene	n.d	<LOQ	<LOQ	n.d	n.d
2-phenylphenol	n.d	n.d	n.d	<LOQ	<LOQ
Chlorpyrifos-methyl	n.d	<LOQ	<LOQ	n.d	n.d
Resmethrin	n.d	<LOQ	n.d	n.d	n.d
Tetramethrin	n.d	n.d	8.3	n.d	n.d
Permethrin	<LOQ	n.d	<LOQ	n.d	n.d
Cyfluthrin	n.d	n.d	<LOQ	n.d	n.d
Fenvalerate	n.d	n.d	n.d	n.d	n.d



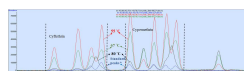
ACCEPTED MANUSCRIPT



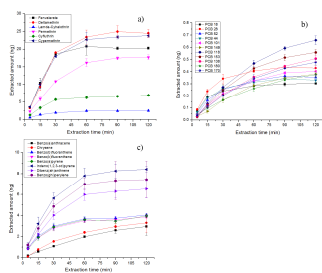
ACCEPTED MANUSCRIPT



ACCEPTED MANUSCRIPT



ACCEPTED MANUSCRIPT



ACCEPTED MANUSCRIPT